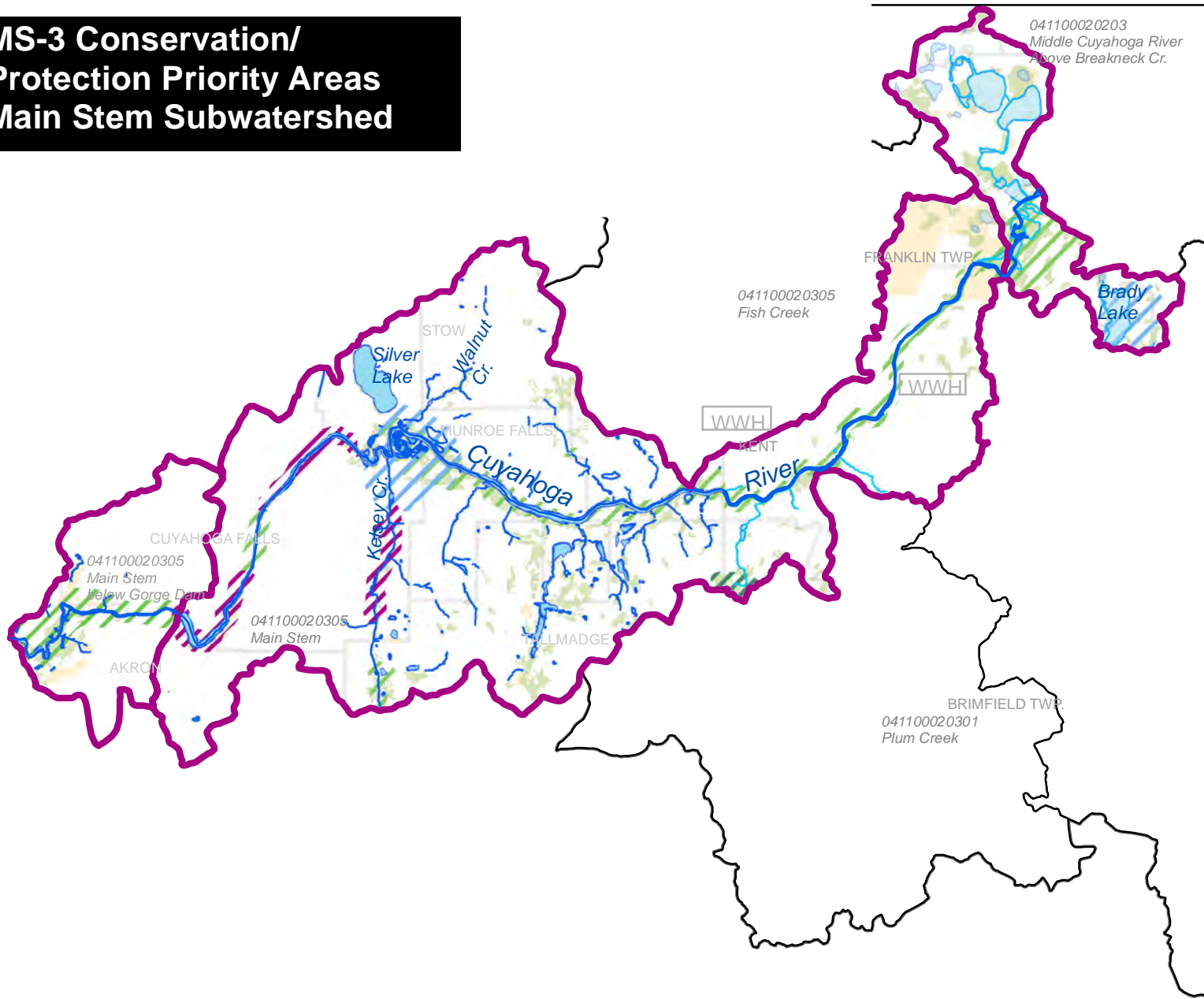









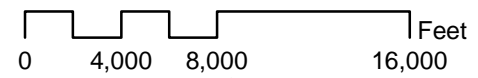
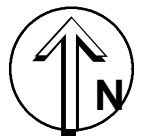
MS-3 Conservation/ Protection Priority Areas Main Stem Subwatershed



Conservation/Protection Priority Areas

-  Riparian Corridor/Wetland
-  Wetlands of Additional Importance (e.g., buffering) - enhance/protect
-  Water Supply Protection - Conservation/BMPs/Outreach
-  Restoration/Conservation of Riparian Area/Wetlands
-  Mapped Wetlands
-  Habitats or Species of Concern Identified on DNR biodiversity database spanning 30 years; Western Reserve Land Conservancy workshop, 2010.)

-  Streams and Rivers
-  Lakes
-  WWH Aquatic Life Use Designation
-  04110002030 Main Stem Subwatershed, 12-Digit HUC
-  Local Jurisdictions



*Sources: NEFCO 2010, Summit, Portage, and Stark Co. GIS 2009-2010; Ohio DNR GIS base map, biodiversity data; 2011. Western Reserve Land Conservancy GIS mapping of conservation areas, 2010; Summit and Portage Counties wetland mapping conducted by Davey Resource Group, 2000-2004. Stark County -2003 land cover mapping; Coastal Change Analysis Program 2006 mapping.