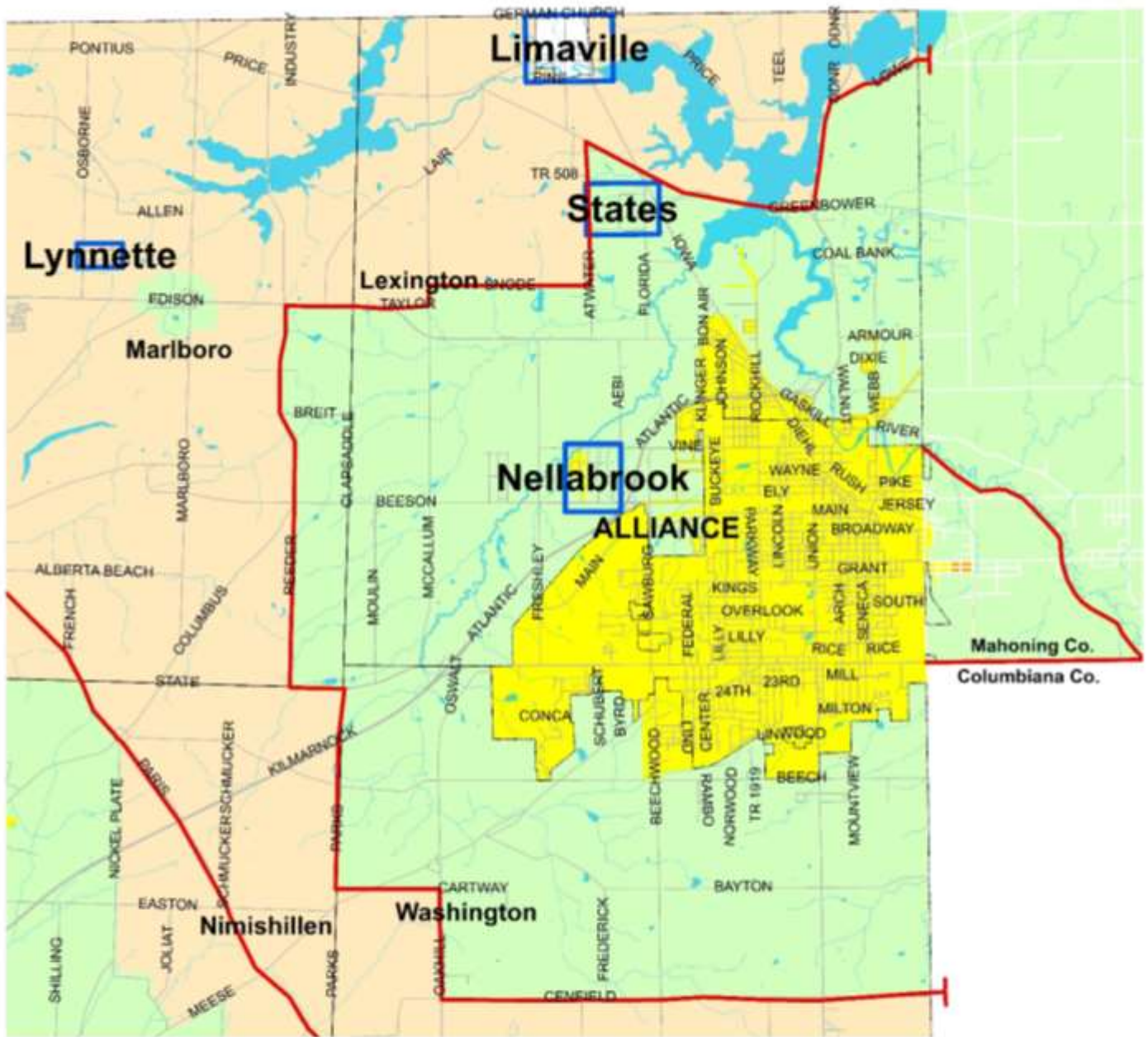
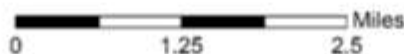


Alliance Facilities Planning Area

208 Clean Water Plan

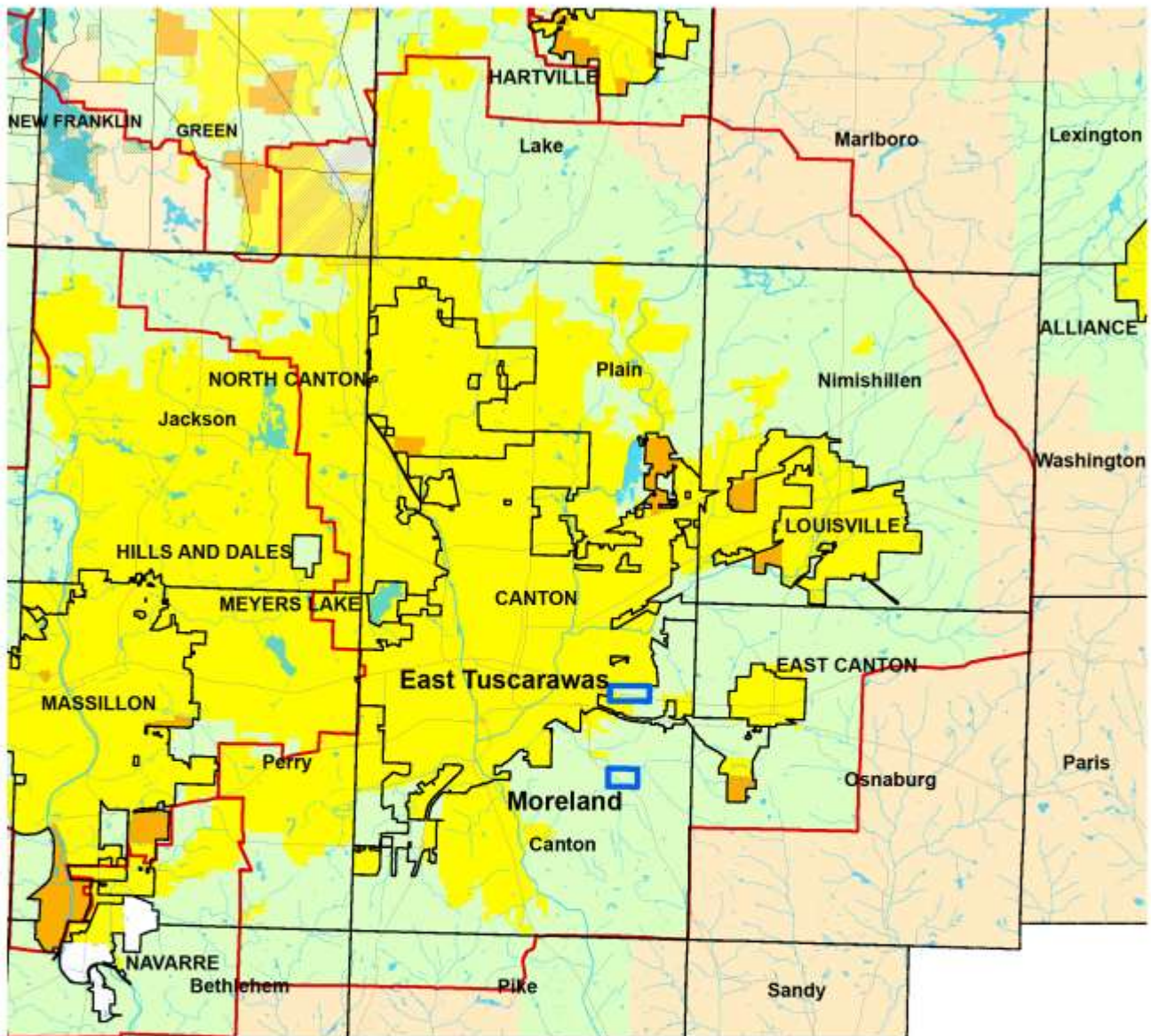


- Areas Currently Served with Sanitary Sewers
- Areas that will be Served by On-site Nondischarging Systems
- Areas that will be Served by a POTW or by On-site Nondischarging Systems
- Areas without a Wastewater Treatment Planning Prescription
- Lakes and Ponds
- FPA Boundary
- Stream
- Community Boundary
- Road
- Publicly Owned Wastewater Treatment Works (POTW)
- Sampling areas



Canton-Nimishillen Facilities Planning Area

208 Clean Water Plan

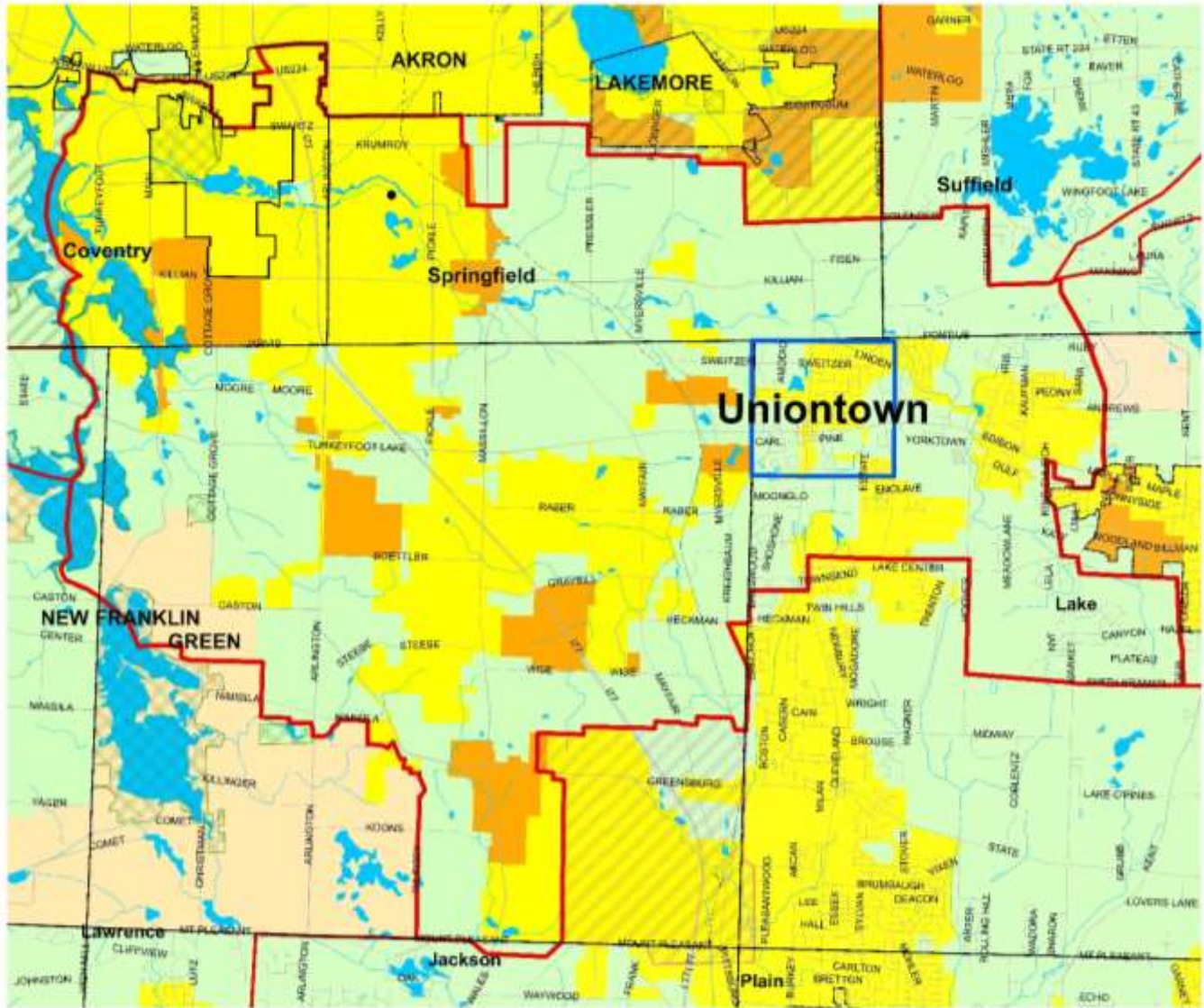


- | | |
|--|--|
|  Areas Currently Served with Sanitary Sewers |  FPA Boundary |
|  Areas Programmed for Sewers within the next 20 years |  Community Boundary |
|  Areas that will be Served by a POTW or by On-site Nondischarging Systems |  Stream |
|  Areas that will be Served by On-site Nondischarging Systems |  Highway |
|  Areas without a Wastewater Treatment Planning Prescription |  Road |
|  Stark - Summit Service Area |  Railroad |
|  Parks and Natural Areas |  Publicly Owned Wastewater Treatment Works (POTW) |
|  Lakes and Ponds |  Sampling areas |



Springfield No. 91 Facilities Planning Area

208 Clean Water Plan

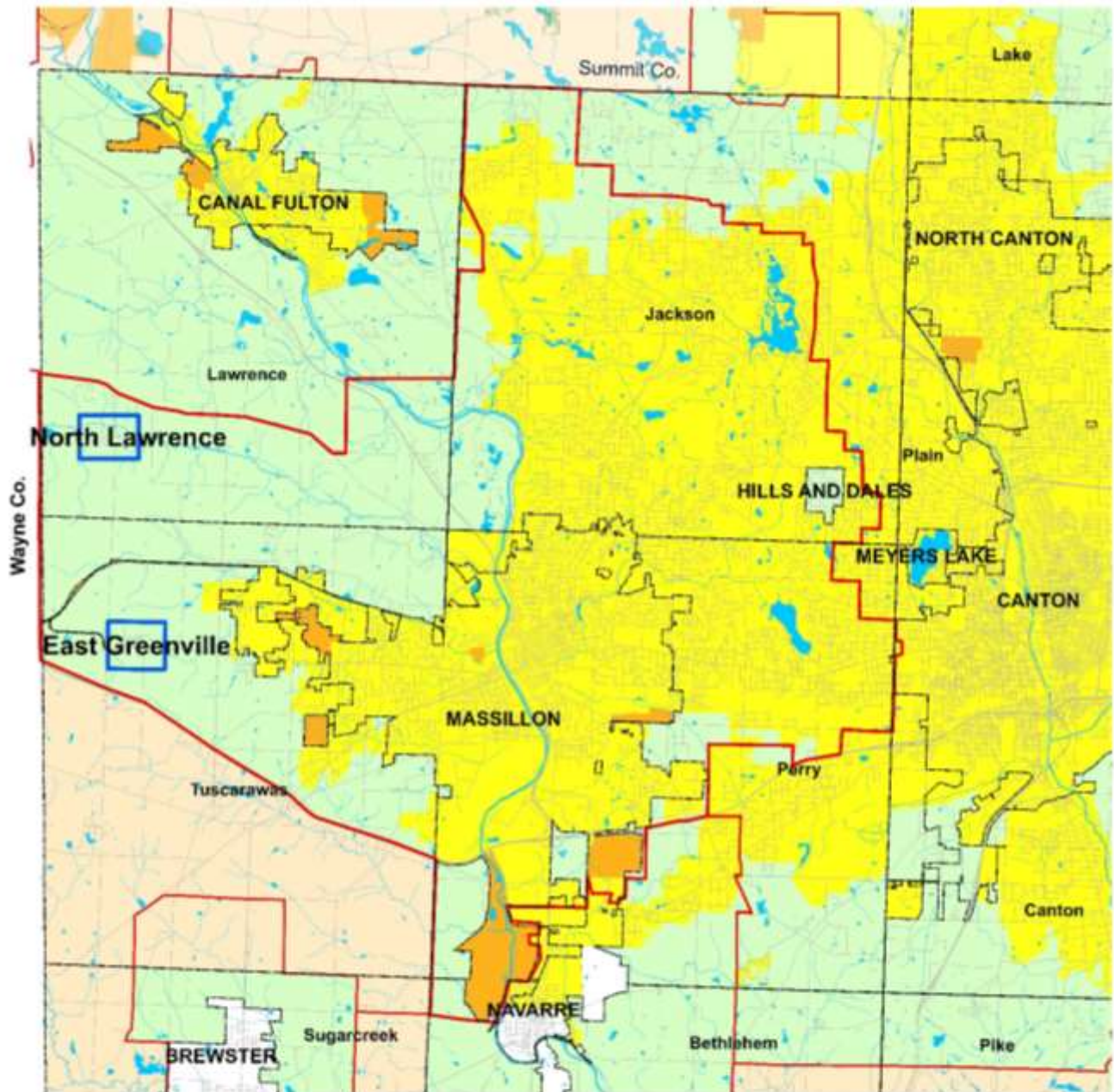


- Areas Currently Served with Sanitary Sewers
- Areas Programmed for Sewers within the next 20 years
- Areas that will be served by On-site Nondischarging Systems
- Areas that will be served by a POTW or by On-site Nondischarging Systems
- Areas without a Wastewater Treatment Planning Prescription
- Akron Joint Economic Development District Contract Areas
- Stark-Summit Service Area
- Lakes and Ponds
- Parks and Natural Areas
- FPA Boundary
- Stream
- Community Boundary
- Highway
- Road
- Publicly Owned Wastewater Treatment Works (POTW)
- Sampling areas



Massillon Facilities Planning Area

208 Clean Water Plan

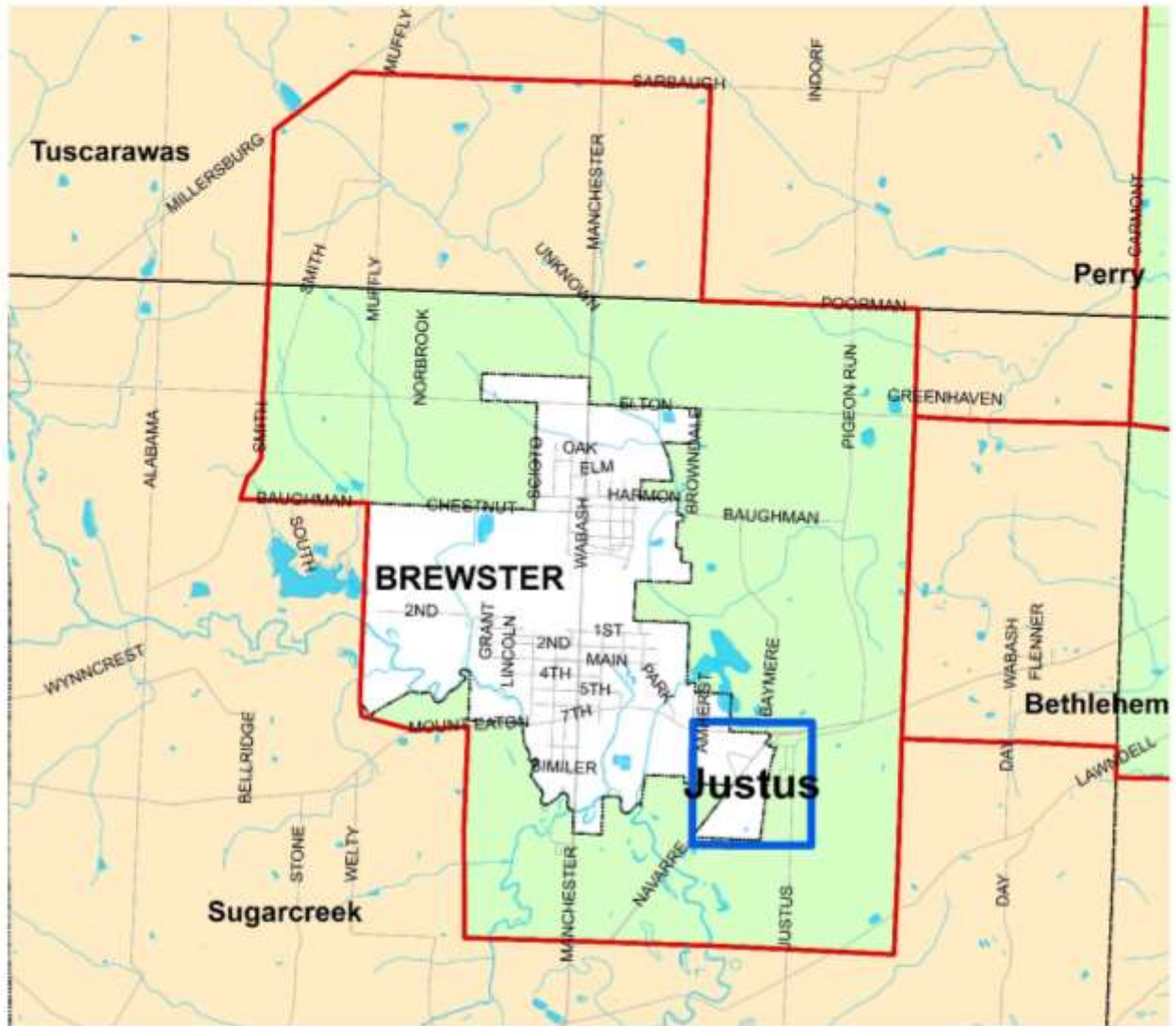


- | | |
|--|--|
|  Areas Currently Served with Sanitary Sewers |  FPA Boundary |
|  Areas Programmed for Sewers within the next 20 years |  Stream |
|  Areas that will be Served by a POTW or by On-site Nondischarging Systems |  Community Boundary |
|  Areas that will be Served by On-site Nondischarging Systems |  Highway |
|  Areas without a Wastewater Treatment Planning Prescription |  Road |
|  Lakes and Ponds |  Railroad |
|  Parks and Natural Areas |  Publicly Owned Wastewater Treatment Works (POTW) |
| |  Sampling areas |



Brewster Facilities Planning Area

208 Clean Water Plan

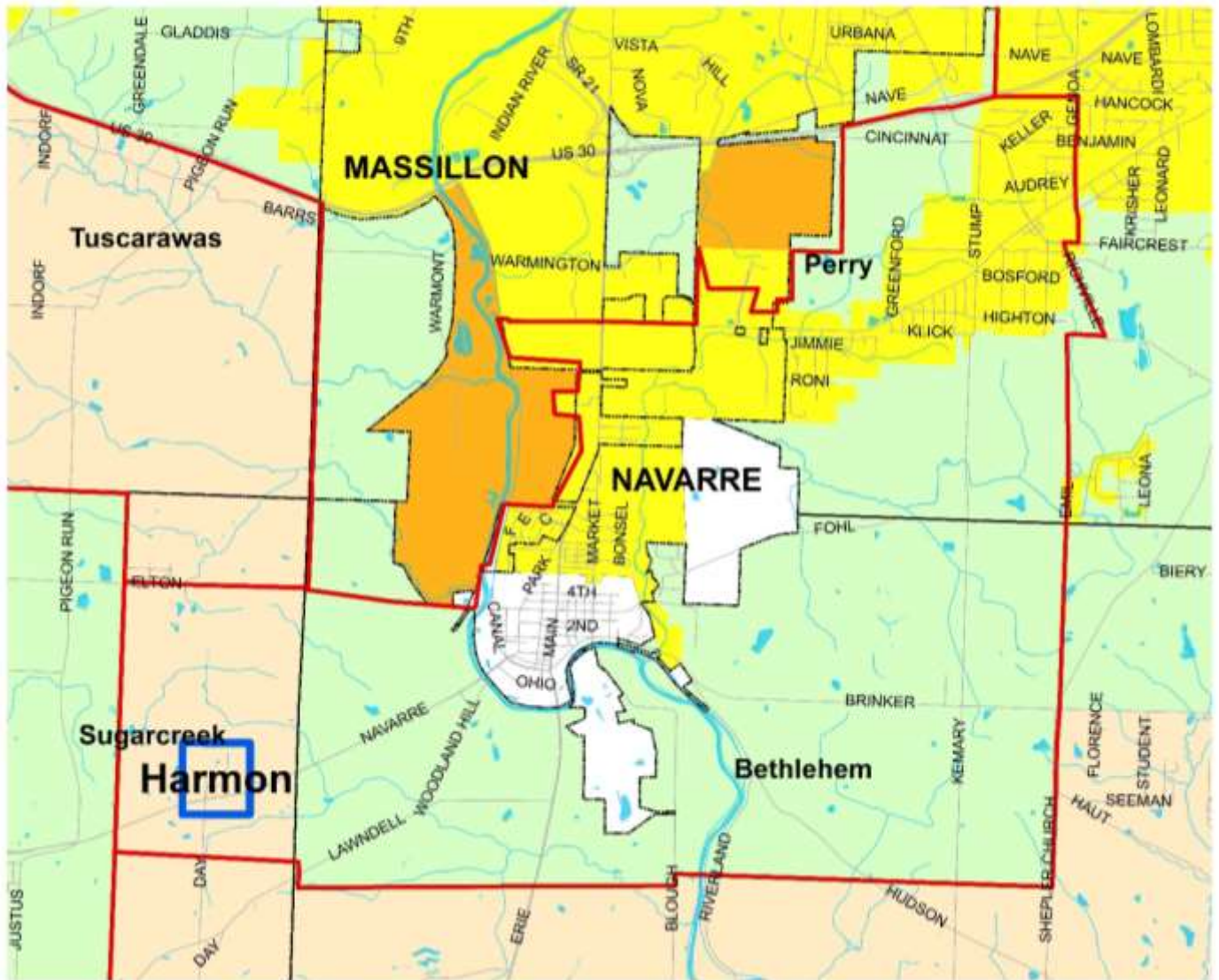






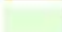





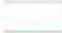


- | | |
|--|---|
| <ul style="list-style-type: none"> Areas that will be Served by a POTW or by On-site Nondischarging Systems Areas that will be Served by On-site Nondischarging Systems Areas without a Wastewater Treatment Planning Prescription Lakes and Ponds | <ul style="list-style-type: none"> FPA Boundary Stream Community Boundary Road Publicly Owned Wastewater Treatment Works (POTW) Sampling areas |
|--|---|



Navarre Facilities Planning Area

208 Clean Water Plan



- | | | | |
|---|--|---|--|
|  | Areas Currently Served with Sanitary Sewers |  | FPA Boundary |
|  | Areas Programmed for Sewers within the next 20 years |  | Stream |
|  | Areas that will be Served by a POTW or by On-site Nondischarging Systems |  | Community Boundary |
|  | Areas that will be Served by On-site Nondischarging Systems |  | Highway |
|  | Areas without a Wastewater Treatment Planning Prescription |  | Road |
|  | Lakes and Ponds |  | Publicly Owned Wastewater Treatment Works (POTW) |
| | |  | Sampling areas |

