

Appendix 3-46

Orrville Facilities Planning Area

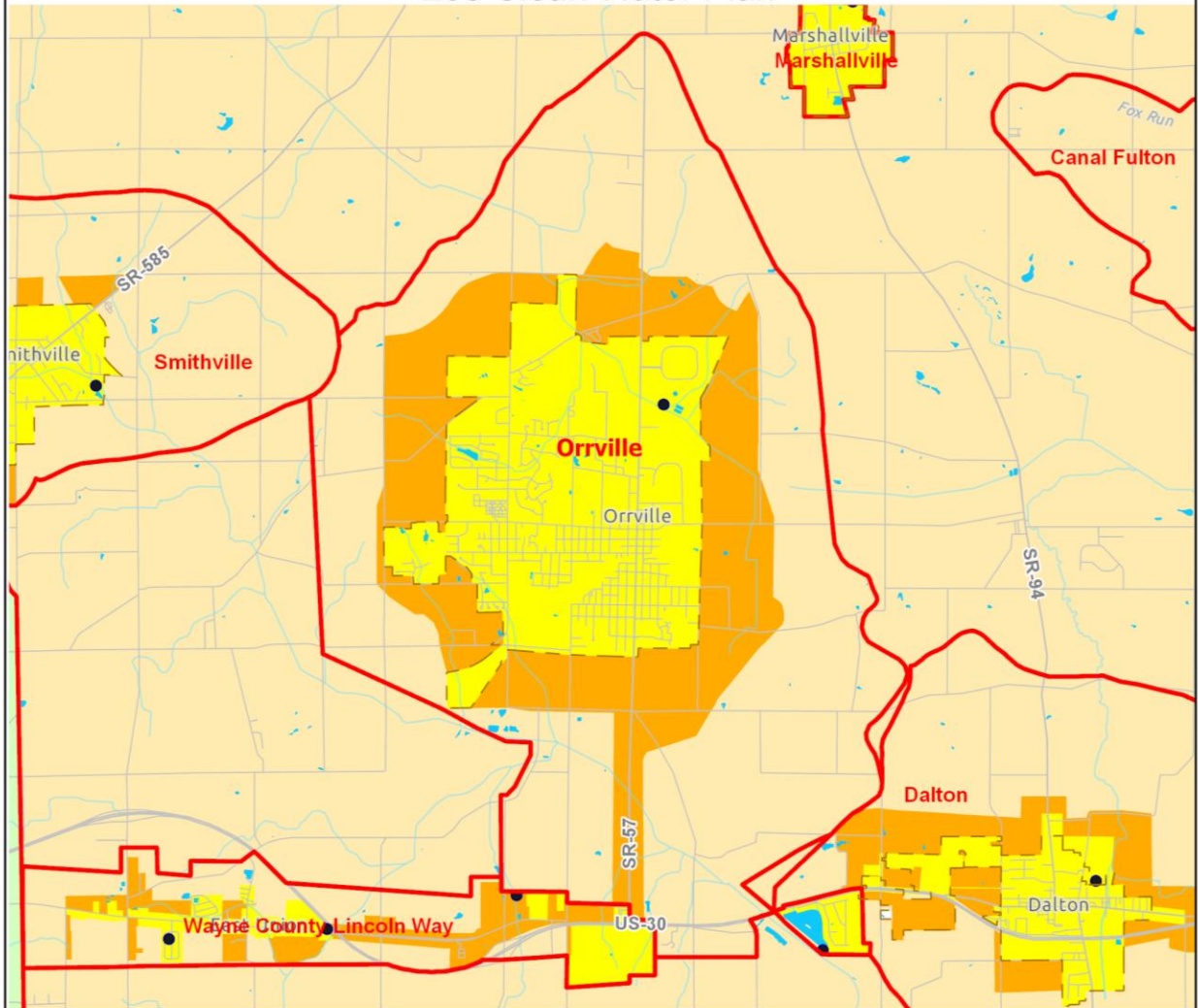
Approved by the NEFCO General Policy Board

3-46-1

11/18/2020

Orrville Facilities Planning Area

208 Clean Water Plan



- | | | | | | | | | | | | | |
|---|--|--|--|---|---|--|---|--|--|---|---|---|
| Areas Currently Served with Sanitary Sewer | Areas Expected to be Served with Sanitary Sewers within the next 20 Years | Areas that will be Served by Home Sewage and Semi-Public Sewage Disposal Systems | Areas that will be Served by a POTW or by Home Sewage and Semi-Public Sewage Disposal Systems | Areas Without a Wastewater Treatment Planning Prescription | Lakes and Ponds | FPA Boundary | Stream | Municipal Boundary | County Boundary | Numbered Route | Other Road | Publicly Owned Wastewater Treatment Works (POTW) |
|---|--|--|--|---|---|--|---|--|--|---|---|---|

0 1 2 Miles



* Please see Clean Water Plan text for a complete explanation of the mapping categories.

* Please see the FPA Reference Map (Appendix 3-1) for names of adjacent FPAs.

Northeast Ohio Four County Regional Planning and Development Organization, 2020
 Sources: Wayne County GIS; Ohio EPA; National Hydrologic Database; AMATS; NEFCO; ESRI base map.

Approved by the NEFCO General Policy Board
 3-46-2
 11/18/2020

Orrville Facilities Planning Area

I. Existing Situation

A. County/Basin:

Wayne/Ohio River Basin

B. Facilities Planning Area:

Orrville

C. Management Agency (MA):

I. Primary MA

a) City of Orrville

II. Secondary MAs

a) Wayne County Office of Environmental Services

b) City of Orrville

D. Publicly-Owned Treatment Works:

Orrville WWTP, 3.2 MGD Design Average Daily Flow (Current Flow 2.1 MGD); 7.0 MGD Maximum Daily Flow

E. Facilities Plan:

The City's consultant, Burgess & Niple, Ltd., prepared all the planning documents for the Orrville Facilities Plan. The initial Plan of Study prepared in September 1975, and the findings of the Infiltration/Inflow Analysis of the Orrville, Ohio Sanitary Sewer System completed in 1978 and the Orrville Sewer System Evaluation Survey, Interim Report, completed in October, 1979 were all incorporated into the Orrville Facilities Plan, Wastewater Collection and Treatment, released for review in August 1980.

Detailed plans of the proposed wastewater treatment plant and sewer system improvements for the City of Orrville was submitted to Ohio EPA-NEDO in January 1987. The plan, which was prepared by Burgess and Niple, Limited, was reviewed and subsequently approved, thereafter.

A revised Sewer Master Plan was prepared by Burgess & Niple, LTD in April 1999.

F. Area Served:

City of Orrville, Baughman Township (part), Green Township (part), Green Township (part), East Union Township (part), and Sugar Creek Township (part)

G. Receiving Stream:

Little Chippewa Creek, a tributary of the Tuscarawas River

H. Contact Person/Address/Phone/Fax:

- a. Mr. Jeff A. Brediger, Director of Utilities
City of Orrville
207 North Main Street, Box 107
Orrville, Ohio 44667
Phone: (330) 684-5012
Fax: (330) 684-5040

- b. Mr. Robert Kastner, P.E., Water Management Engineer
Wayne Soil & Water Conservation District
428 W. Liberty St.
Wooster, OH 44691
Phone: (330) 262-2836

I. Population Served:

The population projections used in the 201 Plan and those in the NEFCO 208 Clean Water Plan are compared below.

Orrville	<u>2000</u>	<u>2005</u>	<u>2010</u>	<u>2015</u>	<u>2020</u>	<u>2025</u>
201	10,306	10,474	-----	-----	-----	-----
Approved 208	10,857	11,275	-----	-----	-----	-----

The above population projections (Approved 208) were prepared in 1990. Updated projections are scheduled to be prepared after county population projections are produced by the Ohio Department of Development Office of Strategic Research.

II. Wastewater Treatment Planning Prescription and Wastewater Planning Options

Original source information provided by the City of Orrville, June 11, 2001 and revised on December 10, 2001.

Wayne County Office of Environmental Services and the City of Orrville Jurisdiction

Areas Currently Served with Sanitary Sewers (yellow):

These areas are currently served, or will be served in the near future, with sanitary sewers and public water.

1) New Development

New Development in this area will be required to connect and/or provide needed infrastructure to connect to existing sewer lines. The cost of connection will be at the developer's expense.

2) **Existing (developed) Properties (not required to tie into the sanitary sewer when the system was initially constructed):**

Existing sewage systems that are functioning properly (as determined by the Ohio EPA and/or the Wayne County Board of Health) will not be required to connect to the sanitary sewer system.

Existing systems that are not functioning properly (as determined by the Ohio EPA and/or the Wayne County Board of Health) will be required to connect to the sanitary sewer system when they are within 200 feet of it, they choose to connect or the Wayne County Board of Health or Ohio EPA directs them to connect. Sewer lateral or sewer main extensions needed to connect will be at the expense of the property owner(s).

Areas Expected to be Served with Sanitary Sewers within the next 20 Years (orange):

These areas are expected to be served by Orrville water and sanitary sewers in the next 5-10 years, based on future development needs or if needed by current property owners.

1) **New Development**

Major new developments (more than 4 houses, industrial, larger commercial, etc. as determined by the City of Orrville) shall be required to connect and/or provide needed infrastructure to connect to existing sewer lines. The cost of connection will be at the developer or property owner's expense.

Minor development (single family, duplex, etc. as determined by the City of Orrville) may be required, by the City of Orrville, Wayne County Board of Health or Ohio EPA to connect and/or provide needed infrastructure to connect to existing sewer lines. The cost of connection will be at the developer or property owner's expense.

2) **Existing, Developed Properties that are not tied into sanitary sewers**

Existing sewage systems that are functioning properly (as determined by the Ohio EPA and/or the Wayne County Board of Health) will not be required to connect to the sanitary sewer system.

Existing sewage systems that are not functioning properly (as determined by the Ohio EPA and/or the Wayne County Board of Health) will be required to connect to the sanitary sewer system when they are within 200 feet of it, or the Wayne County Board of Health or Ohio EPA directs them to connect. Sewer lateral or sewer main extensions needed to connect will be at the expense of the property owner(s).

Areas that will be Served by Home Sewage and Semi-Public Sewage Disposal Systems (cream):

These areas are expected to be served by Orrville water and sanitary sewers in the next 10-30 years, based on future development needs or if needed by current property owners.

1) **New Development**

Large major developments (more than 20 houses, large industrial, large commercial, etc. as determined by the City of Orrville) may be required to connect and/or provide needed infrastructure to connect to existing sewer lines. The cost of connection will be at the developer's expense.

Minor development (single family, duplex, etc. as determined by the City of Orrville) may be required, by the City of Orrville, Wayne County Board of Health or Ohio EPA to connect and/or provide needed infrastructure to connect, to existing sewer lines. The cost of connection will be at the developers or property owner's expense.

2) **Existing, Developed Properties**

Existing sewage systems that are functioning properly (as determined by the Ohio EPA and/or the Wayne County Board of Health) will not be required to connect to the sanitary sewer system.

Existing sewage systems that are not functioning properly (as determined by the Ohio EPA and/or the Wayne County Board of Health) may be required to connect to the sanitary sewer system when they are within 200 feet of it, or the Wayne County Board of Health or Ohio EPA directs them to connect. Sewer lateral or sewer main extensions needed to connect will be at the expense of the property owner(s).