

## **Appendix 3-5**

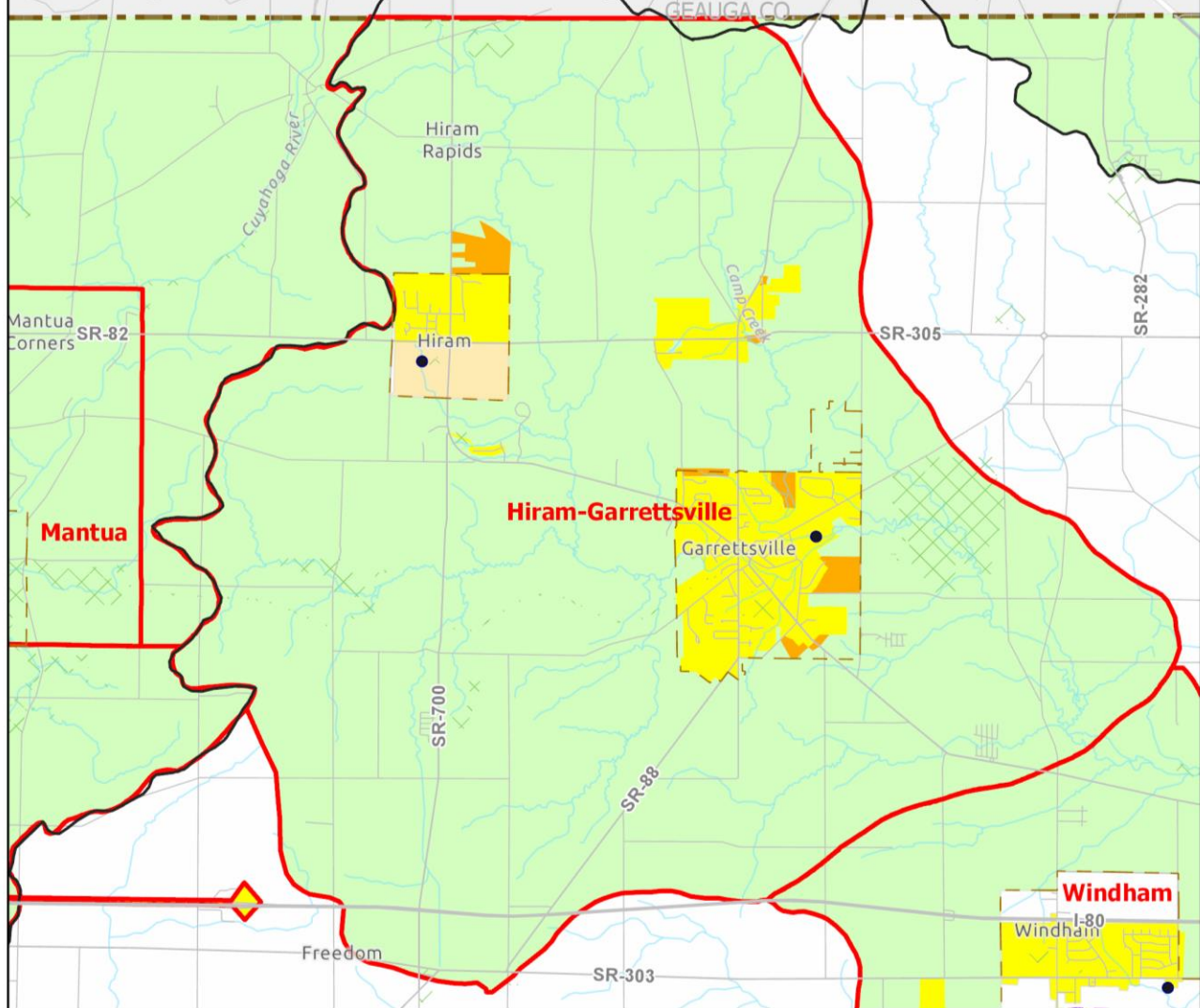
### **Hiram - Garrettsville Facilities Planning Area**

**Approved by the NEFCO General Policy Board**

**11/18/2020**

# Hiram-Garrettsville Facilities Planning Area

## 208 Clean Water Plan



- |   |  |
|---|--|
| Areas Currently Served with Sanitary Sewer  | FPA Boundary                                       |
| Areas Expected to be Served with Sanitary Sewers within the next 20 Years                     | Lake Erie Basin-Ohio River Basin Divide (NHD 2016) |
| Areas that will be Served by Home Sewage and Semi-Public Disposal Systems                     | Stream   |
| Areas that will be Served by a POTW or by Home Sewage and Semi-Public Sewage Disposal Systems | Municipal Boundary                                 |
| Areas Without a Wastewater Treatment Planning Prescription                                    | County Boundary                                    |
| Parks and Conservation Areas  | Numbered Route                                     |
| Lakes and Ponds   | Other Road   |
|   | Publicly Owned Wastewater Treatment Works (POTW)   |

\* Please see Clean Water Plan text for a complete explanation of the mapping categories.  
 \* Please see the FPA Reference Map (Appendix 3-1) for names of adjacent FPAs .

Northeast Ohio Four County Regional Planning and Development Organization, 2020  
 Sources: Portage County GIS; Ohio EPA; National Hydrologic Database; AMATS; NEFCO; ESRI base map.

## **Hiram - Garrettsville Facilities Planning Area**

### **I. Existing Situation**

#### **A. County/Basin:**

Portage/Ohio River Basin

#### **B. Facilities Planning Area:**

Hiram - Garrettsville

#### **C. Management Agency (MA):**

##### **I. Primary MAs**

- a) Portage County Water Resources Department (Portage County Regional Sewer District)
- b) Village of Hiram
- c) Village of Garrettsville

##### **II. Secondary MA**

- a) Portage County Water Resources Department (Portage County Regional Sewer District)

#### **D. Publicly-Owned Treatment Works:**

- a. Village of Hiram WWTP, 0.2000 MGD
- b. Village of Garrettsville WWTP, 0.500 MGD
- c. Western Reserve WWTP, 0.022 MGD

#### **E. Facilities Plan:**

Kudikis, Schade and Associates, Inc., was responsible for the Garrettsville Village segment; Portage County Sanitary Engineer's Department was responsible for Hiram Village and Township segments.

#### **F. Area Served:**

Village of Hiram, Village of Garrettsville and adjoining portions of Hiram, Freedom, Nelson, and Windham Townships

#### **G. Receiving Stream:**

- a. Silver Creek tributary to the Mahoning River
- b. Eagle Creek tributary to the Mahoning River
- c. Camp Creek tributary to the Mahoning River

#### **H. Contact Person/Address/Phone/Fax:**

- |                       |                          |
|-----------------------|--------------------------|
| a. Village of Hiram   | Mr. Rob Simon            |
| 11617 Garfield Road   | Utilities Superintendent |
| Hiram, Ohio 44234     | Village of Hiram         |
| Phone: (330) 569-7860 | P.O. BOX 65              |
| Fax: (330) 569-0128   | Hiram, OH 44234          |

b. Mr. Jeff Sheehan, Utility Supt.  
 Village of Garrettsville  
 8213 High Street  
 P.O. Box 35  
 Garrettsville, Ohio 44231  
 Phone: (330) 527-4424  
 Fax: (330) 527-5819

c. Portage County Water Resources Director/Sanitary Engineer  
 Portage County Water Resources Department  
 8116 Infirmary Road  
 Ravenna, Ohio 44266  
 Phone: (330) 297-3670  
 Fax: (330) 297-3680

**I. Population Served:**

The population projections used in the 201 Plan and those in the NEFCO 208 Clean Water Plan are compared below.

	<u>2000</u>	<u>2005</u>	<u>2010</u>	<u>2015</u>	<u>2020</u>	<u>2025</u>
Hiram-Garrettsville 201	9,960	-----	-----	-----	-----	-----
Approved 208	8,645	8,879	-----	-----	-----	-----

The above population projections (Approved 208) were prepared in 1990. Updated projections are scheduled to be prepared after county population projections are produced by the Ohio Department of Development Office of Strategic Research.

**II. Wastewater Treatment Planning Prescription and Wastewater Planning Options**

Original source information provided by the Portage County Water Resources Department (Portage County Regional Sewer District), June 30, 2000, and Village of Garrettsville, May 8, 2002.

**Areas without a Wastewater Treatment Planning Prescriptions (white):**

These areas currently lack wastewater treatment prescriptions. Future wastewater treatment options will be determined by documented impacts to water resources and “best science” which is defined as the minimum regulatory standards as set by current State and Federal regulations.

Portage County Water Resources Department (Portage County Regional Sewer District) Jurisdictions

**Areas Currently Served with Sanitary Sewers (yellow):**

*Freedom, Windham, Hiram, and Nelson Townships* - These areas are currently served with sanitary sewers that have been constructed and are currently in operation. However, there may be undeveloped tracts of land and vacant lots subject to improvement. All new development and construction in the yellow areas of this facilities planning area will be required to connect to and/or provide sanitary service to ensure that wastewater will be treated at an existing publicly-owned treatment works (POTW) with modifications or

expansions as required to handle the flow. Existing non-residential private treatment systems (semi-public) shall be abandoned, and connection made to the existing sanitary sewer system if available. Failing HSTSs serving single family homes shall be abandoned in accordance with Ohio Administrative Code 3701-29-02.

**Areas that will be Served by a POTW or by Home Sewage and Semi-Public Sewage Disposal Systems (green):**

*Freedom, Windham, Hiram, and Nelson Townships* - Future development will be served by an existing POTW modified or expanded as required to handle the flow or a non-discharging sewage disposal system. Non-discharging systems including on-site septic systems and systems in which the effluent is applied to the land are locally permitted at this time. New discharging systems are only permitted for repair of existing systems in cases where both central sewer and non-discharging systems are not available.

When public restrooms need to be provided on public park property where sewers are not available, holding tanks, or privies may be utilized to store or compost the wastewater and allowance made for the installation, operation, and maintenance. These restroom facilities shall not be connected to a potable water source (for use with sinks, flush toilets, kitchens) nor receive discharges from potable water facilities (including drainage from outside water fountains, kitchens etc.). These facilities must obtain an Ohio EPA Permit-To-Install and supply an operation and maintenance plan to the property owner for their acceptance. The operator shall obtain the appropriate semi-public, commercial operator document from the local jurisdiction or Ohio EPA as applicable.

**Areas Expected to be Served with Sanitary Sewers within the next 20 Years (orange):**

*Freedom, Windham, Hiram, and Nelson Townships* - These areas are proposed to be served with sanitary sewers. However, there may be undeveloped tracts of land and vacant lots subject to improvement. All new development and construction in the yellow areas of this facilities planning area will be required to connect to and/or provide sanitary service to ensure that wastewater will be treated at an existing publicly-owned treatment works (POTW) with modifications or expansions as required to handle the flow. Existing non-residential private treatment systems (semi-public), which cease to operate properly, shall be abandoned and connection made to the existing sanitary sewer system. Failing HSTSs serving single family homes shall be abandoned in accordance with Ohio Administrative Code 3701-29-02.

*Village of Garrettsville Jurisdiction*

**Areas Currently Served with Sanitary Sewers (yellow):**

*Village of Garrettsville* - These areas are currently served with sanitary sewers that have been constructed and are currently in operation. However, there may be undeveloped tracts of land and vacant lots subject to improvement. All new development and construction in the yellow areas of this facilities planning area will be required to connect to and/or provide sanitary service to ensure that wastewater will be treated at an existing publicly-owned treatment works (POTW) with modifications or expansions as required to handle the flow. Existing occupied structures found within 200 feet of an existing sanitary sewer will be required to connect to the sewer system and the existing on-site treatment systems will be abandoned.

**Areas that will be Served by a POTW or by Home Sewage and Semi-Public Sewage Disposal Systems (green):**

*Village of Garrettsville* - This area is a rural setting and is mostly located in the east section of the Village along Silica Road. These areas with undeveloped tracts of land and vacant lots subject to improvements with many existing lots with HSTSs for wastewater treatment. The wastewater generated from these areas has been accounted for within the Village system but sanitary sewers to these areas are not readily available. All new wastewater generated by residential subdivisions, commercial, industrial, and institutional development will be required to connect to the sanitary sewer system for the removal of sanitary wastewater and to ensure that wastewater will be treated at an existing POTW. The developer would be encouraged to extend new sanitary sewers as necessary and connect to existing sanitary sewer system. Existing residential, commercial, industrial, and institutional development will be required to connect to the sanitary sewer system as it becomes available and the existing on-site treatment systems (HSTSs) have failed and/or in need of repair and/or replacement. After connection to the sanitary sewer system the existing on-site systems will be abandoned. Vacant lots within existing HSTS served areas may be so improved with new HSTSs that will be abandoned upon failure and when a sanitary sewer system becomes available, provided the local authorities find the soils suitable to assure there will be no off-lot discharge of effluent. Exceptions maybe granted based on sewer availability, soil conditions and extent of system failure.

**Areas Expected to be Served with Sanitary Sewers within the next 20 Years (orange):**

*Village of Garrettsville* - These areas are projected to receive sewers but are not sewerred yet. Projected wastewater flow from these areas has been accounted for within the system including the following options:

1. All new wastewater generated by residential subdivisions, commercial, industrial, and institutional development will be required to connect to the sanitary sewer system for the removal of sanitary wastewater.
2. Existing residential, commercial, industrial and institutional development will be required to connect to the sanitary sewer system as it becomes available and if the existing on-site treatment systems (HSTSs) have failed and/or are in need of repair and/or replacement. After connection to the sanitary sewer system the existing on-site systems will be abandoned.