

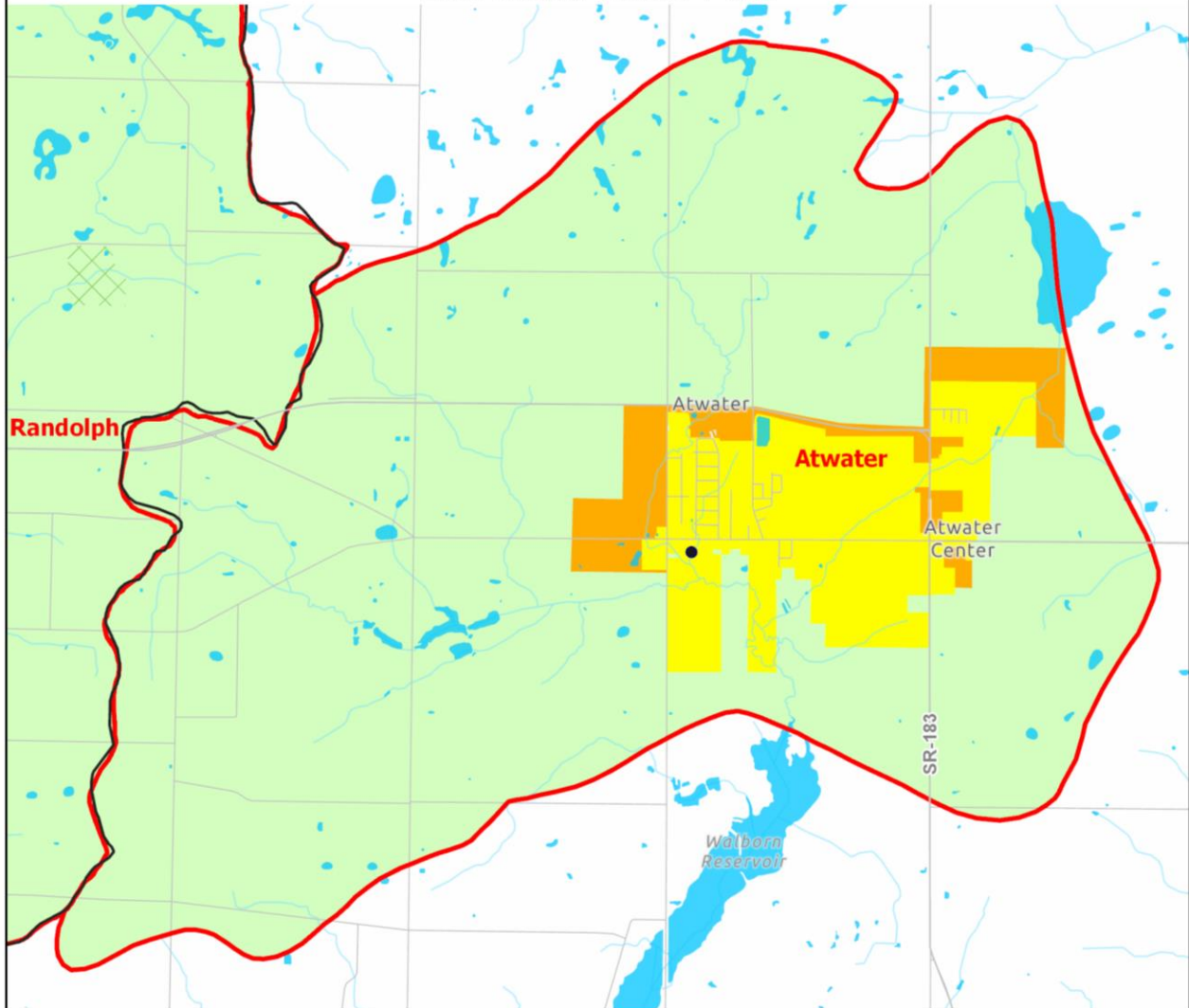
Appendix 3-3

Atwater
Facilities Planning Area

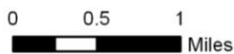
Approved by the NEFCO General Policy Board
11/18/2020

Atwater Facilities Planning Area

208 Clean Water Plan



- | | |
|---|---|
| <ul style="list-style-type: none"> Areas Currently Served with Sanitary Sewer Areas Expected to be Served with Sanitary Sewers within the next 20 Years Areas that will be Served by Home Sewage and Semi-Public Sewage Disposal Systems Areas that will be Served by a POTW or by Home Sewage and Semi-Public Sewage Disposal Systems Areas Without a Wastewater Treatment Planning Prescription Parks and Conservation Areas Lakes and Ponds | <ul style="list-style-type: none"> FPA Boundary Lake Erie Basin-Ohio River Basin Divide (NHD 2016) Stream Municipal Boundary County Boundary Numbered Route Other Road Publicly Owned Wastewater Treatment Works (POTW) |
|---|---|



* Please see Clean Water Plan text for a complete explanation of the mapping categories.
 * Please see the FPA Reference Map (Appendix 3-1) for names of adjacent FPAs .

Northeast Ohio Four County Regional Planning and Development Organization, 2020
 Sources: Portage County GIS; Ohio EPA; National Hydrologic Database; AMATS; NEFCO; ESRI base map.

Approved by the NEFCO General Policy Board
11/18/2020

Atwater Facilities Planning Area

I. Existing Situation

A. County/Basin:

Portage/Ohio River Basin

B. Facilities Planning Area:

Atwater

C. Management Agency (MA):

I. Primary MA

- a) Portage County Water Resources Department (Portage County Regional Sewer District)

II. Secondary MA

- a) Portage County Water Resources Department (Portage County Regional Sewer District)

D. Publicly-Owned Treatment Works:

Atwater WWTP, 0.2000 MGD

E. Facilities Plan:

No Facilities Plan has been prepared. A general plan was prepared and submitted to the Ohio EPA (NEDO) in June 1987 by the Portage County Sanitary Engineer. The general plan evaluated Portage County's existing WWTP and sewer system in Atwater. The plan determined the optimum improvements necessary to attain compliance with all final effluent limitation in its NPDES Permit. The plan was reviewed and approved by Ohio EPA in 1987.

F. Area Served:

Parts of Atwater and Randolph Townships

G. Receiving Stream:

Deer Creek, a tributary to the Mahoning River

H. Contact Person/Address/Phone/Fax:

Portage County Water Resources Director/Sanitary Engineer
Portage County Water Resources Department
8116 Infirmary Road
Ravenna, Ohio 44266
Phone: (330) 297-3670
Fax: (330) 297-3680

Approved by the NEFCO General Policy Board
11/18/2020

I. Population Served:

The population projections used in the 201 Plan and those in the NEFCO 208 Clean Water Plan are compared below.

Atwater	<u>2000</u>	<u>2005</u>	<u>2010</u>	<u>2015</u>	<u>2020</u>	<u>2025</u>
201	----- not prepared -----					
Approved 208	2,319	2,347	-----	-----	-----	-----

The above population projections (Approved 208) were prepared in 1990. Updated projections are scheduled to be prepared after county population projections are produced by the Ohio Department of Development Office of Strategic Research.

II. Wastewater Treatment Planning Prescription and Wastewater Planning Options

Original source information provided by the Portage County Water Resources Department (Portage County Regional Sewer District), June 30, 2000.

Portage County Water Resources Department (Portage County Regional Sewer District) Jurisdictions

Areas Currently Served with Sanitary Sewers (yellow):

Atwater (part), and Randolph (part) Townships - These areas are currently served with sanitary sewers that have been constructed and are currently in operation. However, there may be undeveloped tracts of land and vacant lots subject to improvement. All new development and construction in the yellow areas of this facility planning area will be required to connect to and/or provide sanitary service to ensure that wastewater will be treated at an existing publicly-owned treatment works (POTW) with modifications or expansions as required to handle the flow. Existing non-residential private treatment systems (semi-public), shall be abandoned, and connection made to the existing sanitary sewer system if available. Failing home sewage treatment systems (HSTSs) serving single family homes shall be abandoned in accordance with Ohio Administrative Code 3701-29-02.

Areas that will be Served by a POTW or by Home Sewage and Semi-Public Sewage Disposal Systems (green):

Atwater (part), and Randolph (part) Townships - Future development will be served by an existing POTW modified or expanded as required to handle the flow or a non-discharging sewage disposal system. Non-discharging systems including on-site septic systems and systems in which the effluent is applied to the land are locally permitted at this time. New discharging systems are only permitted for repair of existing systems in cases where both central sewer and non-discharging systems are not available.

Areas Expected to be Served with Sanitary Sewers within the next 20 Years (orange):

Atwater (part), and Randolph (part) Townships - These areas are proposed to be served with sanitary sewers. However, there may be undeveloped tracts of land and vacant lots subject to improvement. All new development and construction in the yellow areas of this facility planning area will be required to connect to and/or provide sanitary service to ensure that wastewater will be treated at an existing publicly-owned treatment works (POTW) with modifications or expansions as required to handle the flow. Existing non-residential private

**Approved by the NEFCO General Policy Board
11/18/2020**

treatment systems (semi-public), which cease to operate properly, shall be abandoned and connection made to the existing sanitary sewer system. Failing HSTSs serving single family homes shall be abandoned in accordance with Ohio Administrative Code 3701-29-02.

Approved by the NEFCO General Policy Board
11/18/2020