

Appendix 3-27

Summit County Facilities Planning Areas (FPA)

Summit County Facilities Planning Areas

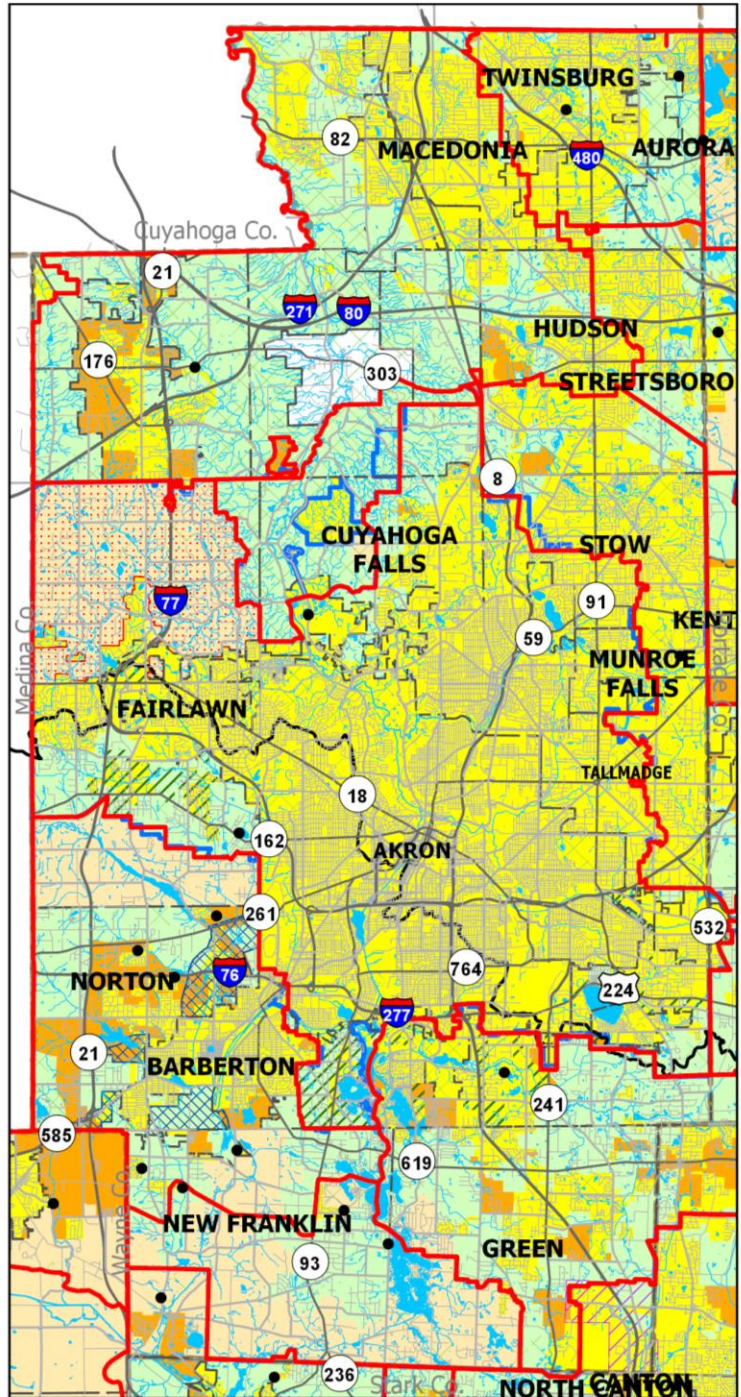
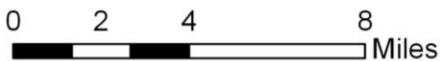
208 Clean Water Plan - 2020 update

DRAFT 11/5/2019

- Areas Currently Served with Sanitary Sewers
- Areas Expected to be Served with Sanitary Sewers within the next 20 years
- Areas that will be served by Home Sewage and Semi-Public Sewage Disposal Systems
- Areas that will be served by a POTW or by Home Sewage and Semi-Public Sewage Disposal Systems
- Akron Joint Economic Development District Contract Areas
- Areas without a Wastewater Treatment Planning Prescription
- Bath Township Water and Sewer District
- Stark-Summit Service Area
- Barberton JEDD
- Parks and Natural Areas
- Lakes and Ponds
- FPA Boundary
- Basin Divide
- Stream
- Community Boundary
- Highway
- Road
- Publicly-Owned Wastewater Treatment Works (POTW)

* Please see Clean Water Plan text for a complete explanation of the mapping categories.

* Please see the FPA Reference Map (figure 3-1a) for names of adjacent FPAs.



Northeast Ohio Four County Regional Planning and Development Organization, Nov. 1, 2018.
 Sources: Summit County GIS; Portage County GIS; Stark County GIS; Wayne County GIS;
 Summit County Dept. of Sanitary Sewer Services; Ohio EPA GIS; National Hydrologic Database; AMATS; NEFCO 2018.