

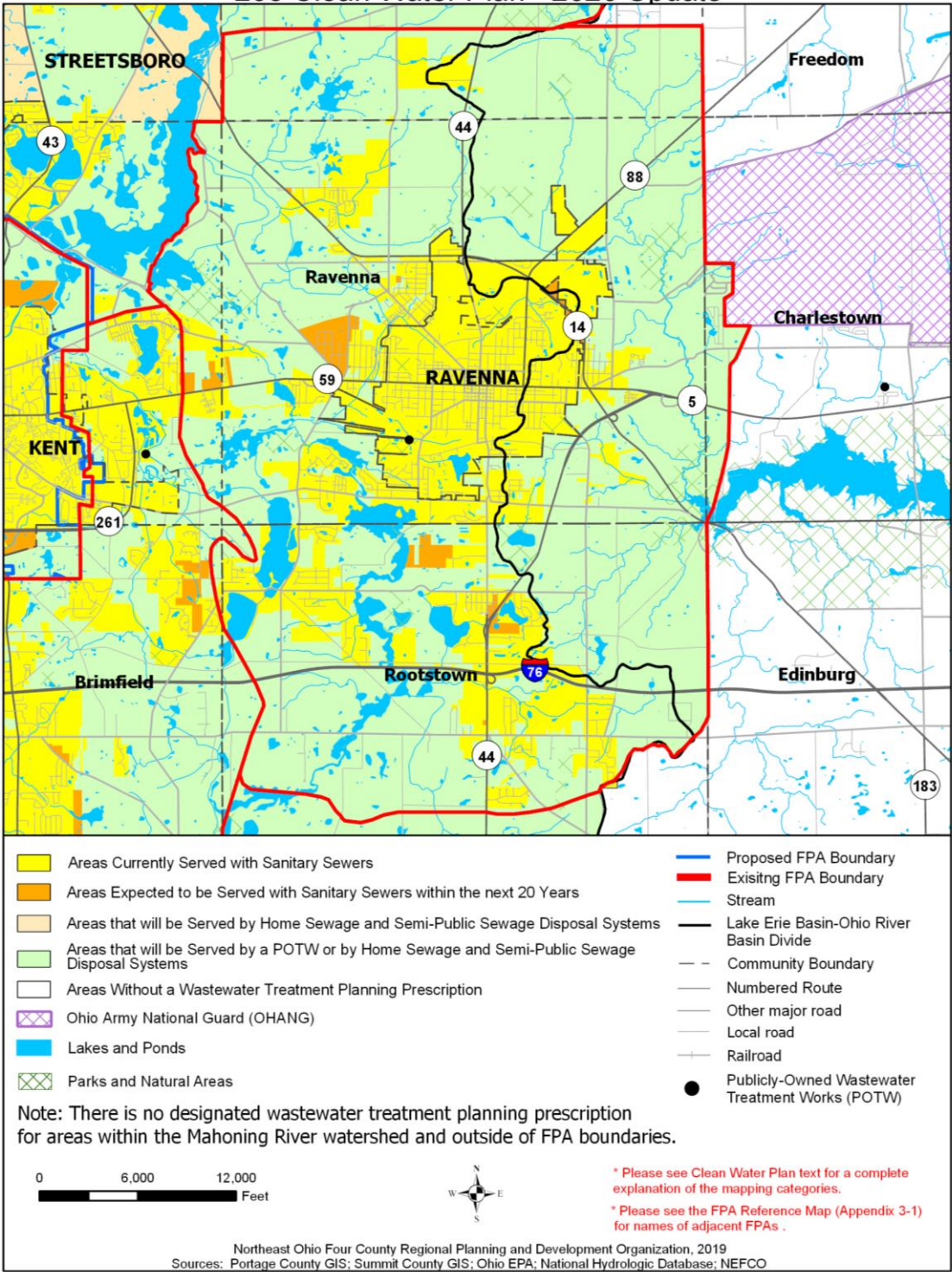
Appendix 3-10

Ravenna
Facilities Planning Area

Current Plan approved by the NEFCO General Policy Board
10/17/2018

Ravenna Facilities Planning Area

208 Clean Water Plan - 2020 Update



Current Plan approved by the NEFCO General Policy Board
 10/17/2018

Ravenna Facilities Planning Area

I. Existing Situation

A. County/Basin:

Portage/Lake Erie

B. Facilities Planning Area:

Ravenna

C. Designated Management Agency (DMA):

I. Primary DMA

a) City of Ravenna

II. Secondary DMA

a) Portage County Water Resources Department

b) City of Ravenna

D. Publicly-Owned Treatment Works:

Ravenna WWTP, 2.3 MGD (2.8 MGD Summer/2.8 MGD Winter)

E. Facilities Plan:

John David Jones & Associates, responsible for submittal of Ravenna Regional Facilities Plan; Portage County Sanitary Engineer, responsible for preparing the facilities plan for the township areas; Floyd G. Browne & Associates, completed Ravenna City Infiltration/Inflow Analysis; Portage County, completed the Lakeview Gardens SSES and the city's consultant has completed an SSES for portions of the city's sewer system.

F. Area Served:

City of Ravenna, Ravenna Township, Shalersville Township (part), Rootstown Township (part), Franklin Township (part), Charlestown Township (part).

G. Receiving Stream:

Hommon Ditch of Breakneck Creek, a tributary to the Cuyahoga.

H. Contact Person/Address/Phone/Fax:

a) Mr. Robert N. Finney, City Engineer	b) Director/Sanitary Engineer
City of Ravenna	Portage County Water Resources
530 N. Freedom St.	8116 Infirmary Road
Ravenna, Ohio 44266	Ravenna, Ohio 44266
Phone: (330) 296-5666	Phone: (330) 297-3670
Fax: (330) 297-2166	Fax: (330) 297-3680

I. Population Served:

The population projections used in the 201 Plan and those in the NEFCO 208 Clean Water Plan are compared below.

	<u>1990</u>	<u>1995</u>	<u>2000</u>	<u>2005</u>	<u>2010</u>	<u>2015</u>	<u>2020</u>	<u>2025</u>
Ravenna 201	31,235	32,500	34,482	----	----	----	----	----
Approved 208	30,869	32,831	33,944	34,827	----	----	----	----

The above population projections (Approved 208) were prepared in 1990. Updated projections are scheduled to be prepared after county population projections are produced by the Ohio Department of Development Office of Strategic Research.

II. Wastewater Treatment Planning Prescriptions and Wastewater Planning Options

Original source information provided by the Portage County Water Resources Department (Portage County Regional Sewer District), June 30, 2000, and the City of Ravenna, July 14, 2000.

City of Ravenna Jurisdiction

Areas Currently Sewered Served with Sanitary Sewers (yellow):

Of 4000+ water customers, approximately 20 still have septic systems. No new building is permitted in areas that do not have public sewers. Any property owner’s boundary within 100 feet of a public sewer must tie-in to that sewer at the owner’s expense. None of the 20 on-site systems are presently a known health problem. If in the future a problem develops, the owners will be encouraged to extend a public sewer to their property if feasible. If a public sewer is not feasible, the owner will be required to repair or replace the on-site system in accordance with the regulations of the Portage County Health Department.

Portage County Water Resources Department (Portage County Regional Sewer District) Jurisdictions

Areas Currently Sewered Served with Sanitary Sewers (yellow):

Shalersville (part), Ravenna (part), Franklin (part), Rootstown (part) and Brimfield (part) Townships - These areas are currently served with sanitary sewers that have been constructed and are currently in operation. However, there may be undeveloped tracts of land and vacant lots subject to improvement. All new development and construction in the yellow areas of this facility planning area will be required to connect to and/or provide sanitary service to ensure that wastewater will be treated at an existing publicly-owned treatment works (POTW) with modifications or expansions as required to handle the flow. Existing non-residential private treatment systems (semi-public) shall be abandoned and connection made to the existing sanitary sewer system if available. Failing HSDSs serving single family homes shall be abandoned in accordance with Ohio Administrative Code 3701-29-02.

Areas that will be Served by a POTW or by Home Sewage and Semi-Public Sewage Disposal Systems On-site Non-discharging Systems (green):

Shalersville, Ravenna, Charlestown, Franklin and Rootstown Township - Future development will be served by an existing POTW modified or expanded as required to handle the flow or a non-discharging sewage disposal system. Non-discharging systems including on-site septic systems and systems in which the effluent is applied to the land are locally permitted at this time. New discharging systems are only permitted for repair of existing systems in cases where both central sewer and non-discharging systems are not available.

**Current Plan approved by the NEFCO General Policy Board
10/17/2018**

When public restrooms need to be provided on public park property where sewers are not available, holding tanks, or privies may be utilized to store or compost the wastewater and allowance made for the installation, operation, and maintenance. These restroom facilities shall not be connected to a potable water source (for use with sinks, flush toilets, kitchens) nor receive discharges from potable water facilities (including drainage from outside water fountains, kitchens etc.). These facilities must obtain an Ohio EPA Permit-To-Install and supply an operation and maintenance plan to the property owner for their acceptance. The operator shall obtain the appropriate semi-public, commercial operator document from the local jurisdiction or Ohio EPA as applicable.