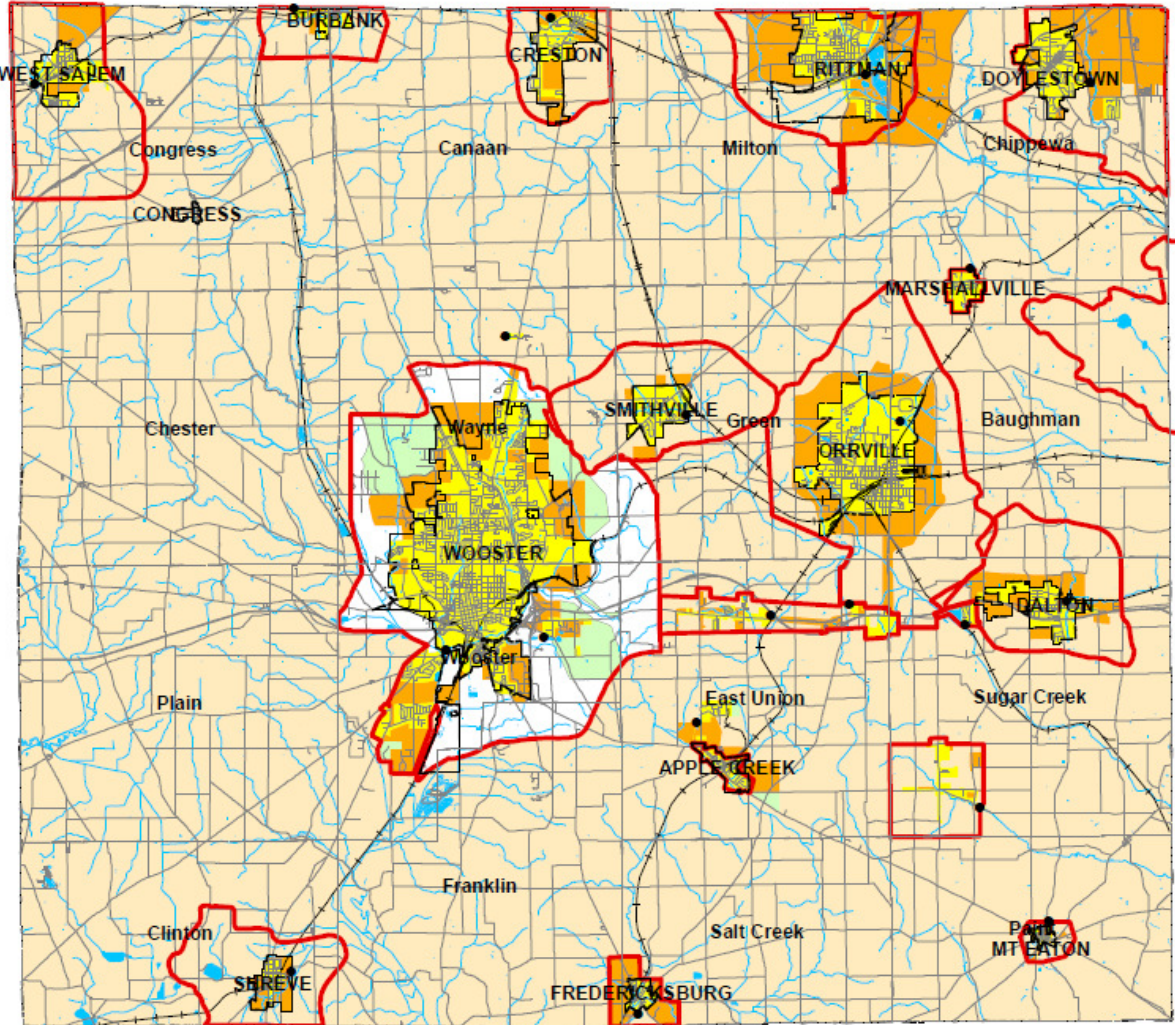


# **Appendix 3-35**

## **Wayne County Facilities Planning Areas (FPA)**

# Wayne County Facilities Planning Areas

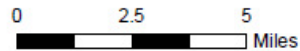
## 208 Clean Water Plan



- |   |  |
|---|--|
| Areas Currently Served with Sanitary Sewers   | FPA Boundary                                     |
| Areas Expected to be Served with Sanitary Sewers within the Next 20 Years                     | Stream   |
| Areas that will be Served by Home Sewage and Semi-Public Sewage Disposal Systems              | Community Boundary                               |
| Areas that will be Served by a POTW or by Home Sewage and Semi-Public Sewage Disposal Systems | Road   |
| Areas without a Wastewater Treatment Planning Prescription                                    | Publicly Owned Wastewater Treatment Works (POTW) |
| Lakes and Ponds   |  |

\* Please see Clean Water Plan text for a complete explanation of the mapping categories.

\* Please see the FPA Reference Map (figure 3-1a) for names of adjacent FPAs.



Northeast Ohio Four County Regional Planning and Development Organization, December 19, 2012.