

# **Appendix 3-26**

## **Summit County Facilities Planning Areas (FPA)**

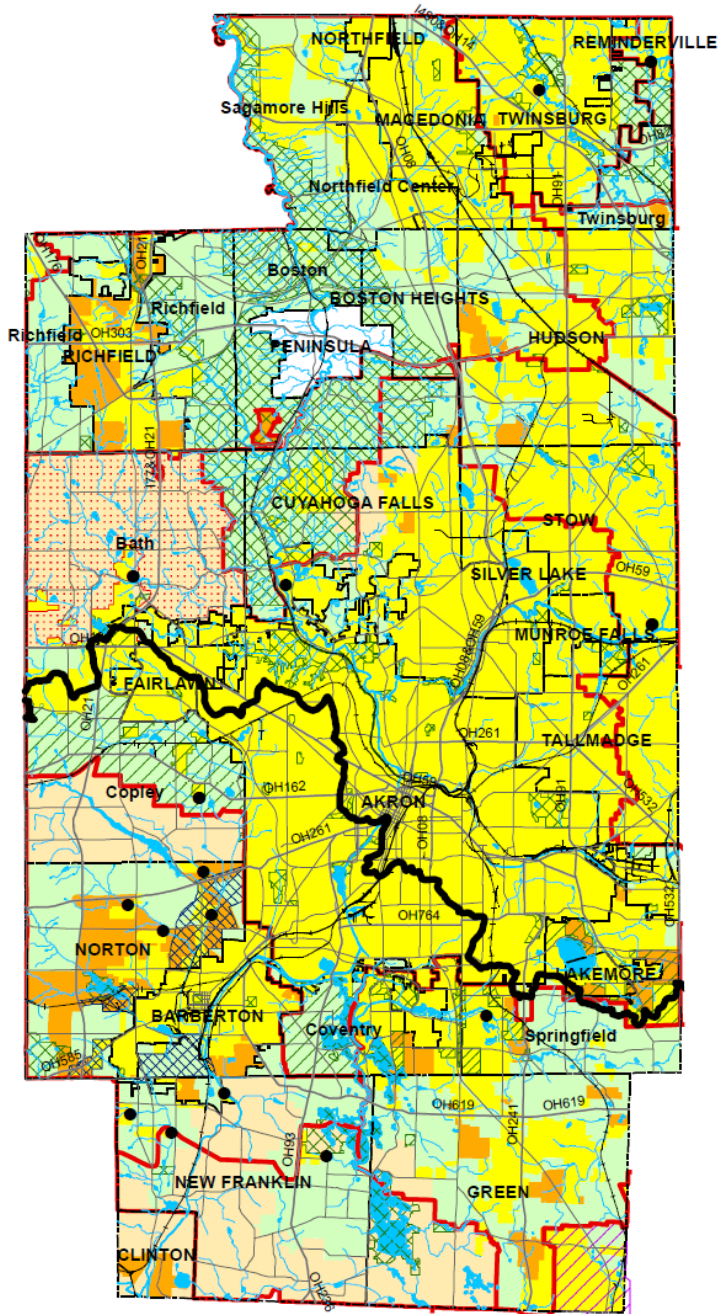
# Summit County Facilities Planning Areas

## 208 Clean Water Plan

- Areas Currently Sewered
- Areas Programmed for Sewers within the next 20 years
- Areas that will be served by On-site Nondischarging Systems
- Areas that will be served by a POTW or by On-site Nondischarging Systems
- Akron Joint Economic Development District Contract Areas
- Areas without a Wastewater Treatment Planning Prescription
- Bath Township Water and Sewer District
- Stark-Summit Service Area
- Parks and Natural Areas
- Lakes and Ponds
- FPA Boundary
- Basin Divide
- Stream
- Community Boundary
- Highway
- Road
- Publicly-Owned Wastewater Treatment Works (POTW)

\* Please see Clean Water Plan text for a complete explanation of the mapping categories.

\* Please see the FPA Reference Map (figure 3-1a) for names of adjacent FPAs.



Northeast Ohio Four County Regional Planning and Development Organization, June 18, 2014.  
 Source: Ohio Department of Natural Resources; Division of Real Estate and Land Management; Summit County D.O.E.S.