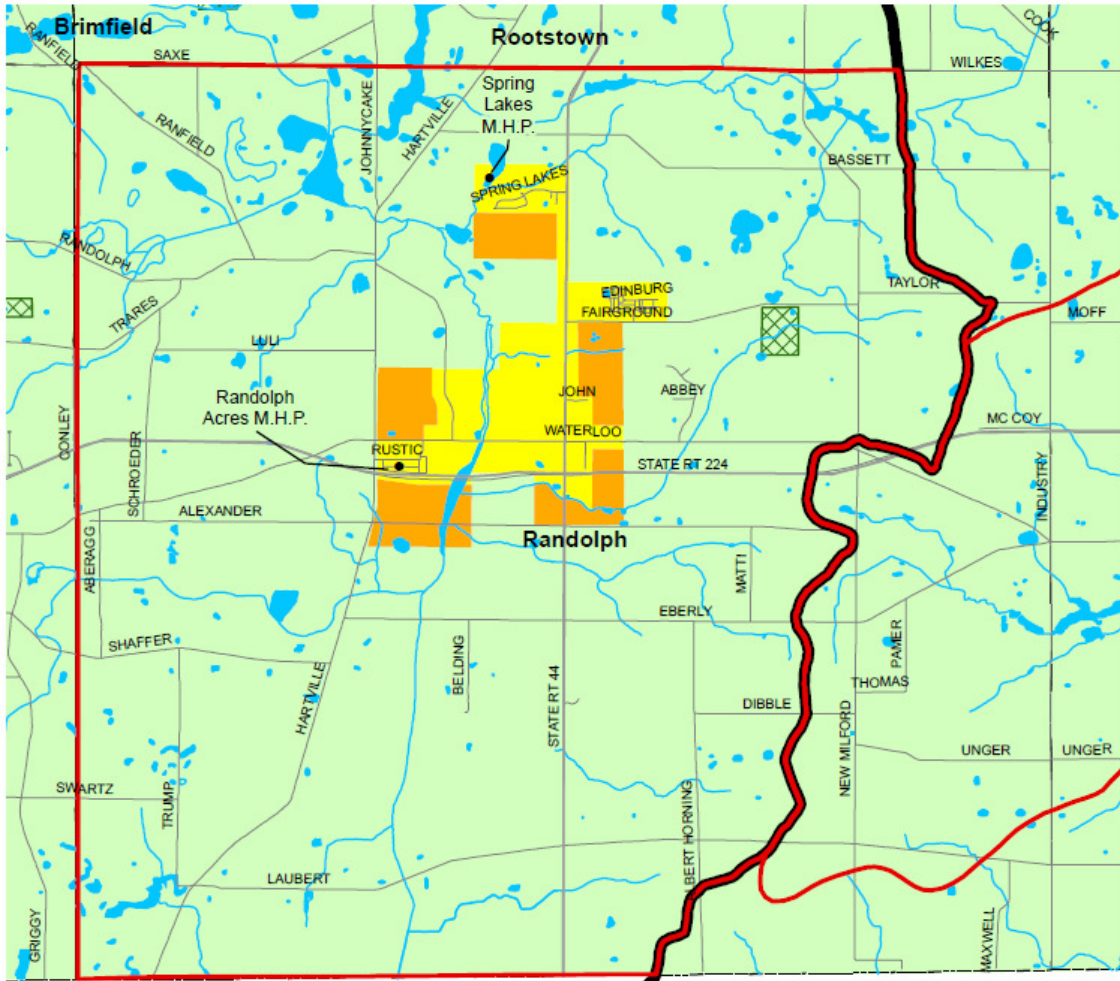


Appendix 3-9
Randolph
Facilities Planning Area

Approved by the NEFCO General Policy Board
12/21/2011

Randolph Facilities Planning Area

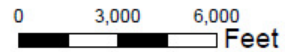
208 Clean Water Plan



- Areas Currently Served with Sanitary Sewers
- Areas Expected to be Served with Sanitary Sewers within the Next 20 years
- Areas that will be Served by a POTW or by Home Sewage and Semi-Public Sewage Disposal Systems
- Parks and Natural Areas
- Lakes and Ponds

- Basin Divide
- FPA Boundary
- Stream
- Community Boundary
- Highway
- Road
- Publicly Owned Wastewater Treatment Works (POTW)

* Please see Clean Water Plan text for a complete explanation of the mapping categories.
 * Please see the FPA Reference Map (figure 3-1a) for names of adjacent FPAs.



Northeast Ohio Four County Regional Planning and Development Organization, December 21, 2011.

Approved by the NEFCO General Policy Board
 12/21/2011

Randolph Facilities Planning Area

I. Existing Situation

A. County/Basin:

Portage/Lake Erie

B. Facilities Planning Area:

Randolph

C. Designated Management Agency (DMA):

I. Primary DMA

- a) Portage County Water Resources Department (Portage County Regional Sewer District)

II. Secondary DMA

- a) Portage County Water Resources Department (Portage County Regional Sewer District)

D. Publicly-Owned Treatment Works:

Randolph WWTP 0.3 MGD ~~Wastewater Treatment Plant~~

E. Facilities Plan:

Not written

F. Area Served:

Randolph Township

G. Receiving Stream:

Congress Lake Outlet

H. Contact Person/Address/Phone/Fax:

Mr. Jeff Lonzrick, Interim Director/Sanitary Engineer
Portage County Water Resources
(Portage County Regional Sewer District)
Portage County Administration Building
449 South Meridian Street
P.O. Box 1217
Ravenna, Ohio 44266-0812
Phone: (330) 297-3670
Fax: (330) 297-3680

Approved by the NEFCO General Policy Board
12/21/2011

I. Population Served:

The population projections used in the 201 Plan and those in the NEFCO 208 Clean Water Plan are compared below.

Population projection:	2000	2005	2010	2015	2020	2025
201 Randolph Township Approved 208	NOT AVAILABLE					
Randolph Township(a)	5,055	5,108	5,182	5,255	5,345	5,424

Population projections for the Randolph Township 201 area have not been developed. Updated projections are scheduled to be prepared after county population projections are produced by the Ohio Department of Development Office of Strategic Research.

(a) Adopted by the NEFCO General Policy Board in 2000.

II. Wastewater Treatment Planning Prescriptions and Wastewater Planning Options

Original source information provided by the Portage County Water Resources Department (Portage County Regional Sewer District), June 30, 2000.

Portage County Water Resources Department (Portage County Regional Sewer District) Jurisdiction

Areas Currently Sewered (yellow):

Randolph Township (part) - These areas are currently served with sanitary sewers that have been constructed and are currently in operation. However, there may be undeveloped tracts of land and vacant lots subject to improvement. All new development and construction in the yellow areas of this facility planning area will be required to connect to and/or provide sanitary service to ensure that wastewater will be treated at an existing publicly-owned treatment works (POTW) with modifications or expansions as required to handle the flow. Existing non-residential private treatment systems (semi-public) shall be abandoned and connection made to the existing sanitary sewer system if available. Failing home sewage treatment systems (HSTSs) serving single family homes shall be abandoned in accordance with Ohio Administrative Code 3701-29-02.

Areas Currently Programmed To Be Sewered (orange):

Randolph Township (part) - These areas are proposed to be served with sanitary sewers. However, there may be undeveloped tracts of land and vacant lots subject to improvement. All new development and construction in the yellow areas of this facility planning area will be required to connect to and/or provide sanitary service to ensure that wastewater will be treated at an existing publicly-owned treatment works (POTW) with modifications or expansions as required to handle the flow. Existing non-residential private treatment systems (semi-public), which cease to operate properly, shall be abandoned and connection made to the existing sanitary sewer system. Failing HSTSs serving single family homes shall be abandoned in accordance with Ohio Administrative Code 3701-29-02.

**Approved by the NEFCO General Policy Board
12/21/2011**

Areas That Will be Served by a POTW or by On-Site Non-discharging Systems (green):

Randolph Township (part) - Future development will be served by existing POTW modified or expanded as required to handle the flow or a non-discharging sewage disposal system. Non-discharging systems including on-site septic systems and systems in which the effluent is applied to the land are locally permitted at this time. New discharging systems are only permitted for repair of existing systems in cases where both central sewer and non-discharging systems are not available.

The new wastewater treatment plant also serves the Spring Lakes and Fox Run (fka Randolph Acres Mobile Home Parks and the Randolph Fairgrounds).