

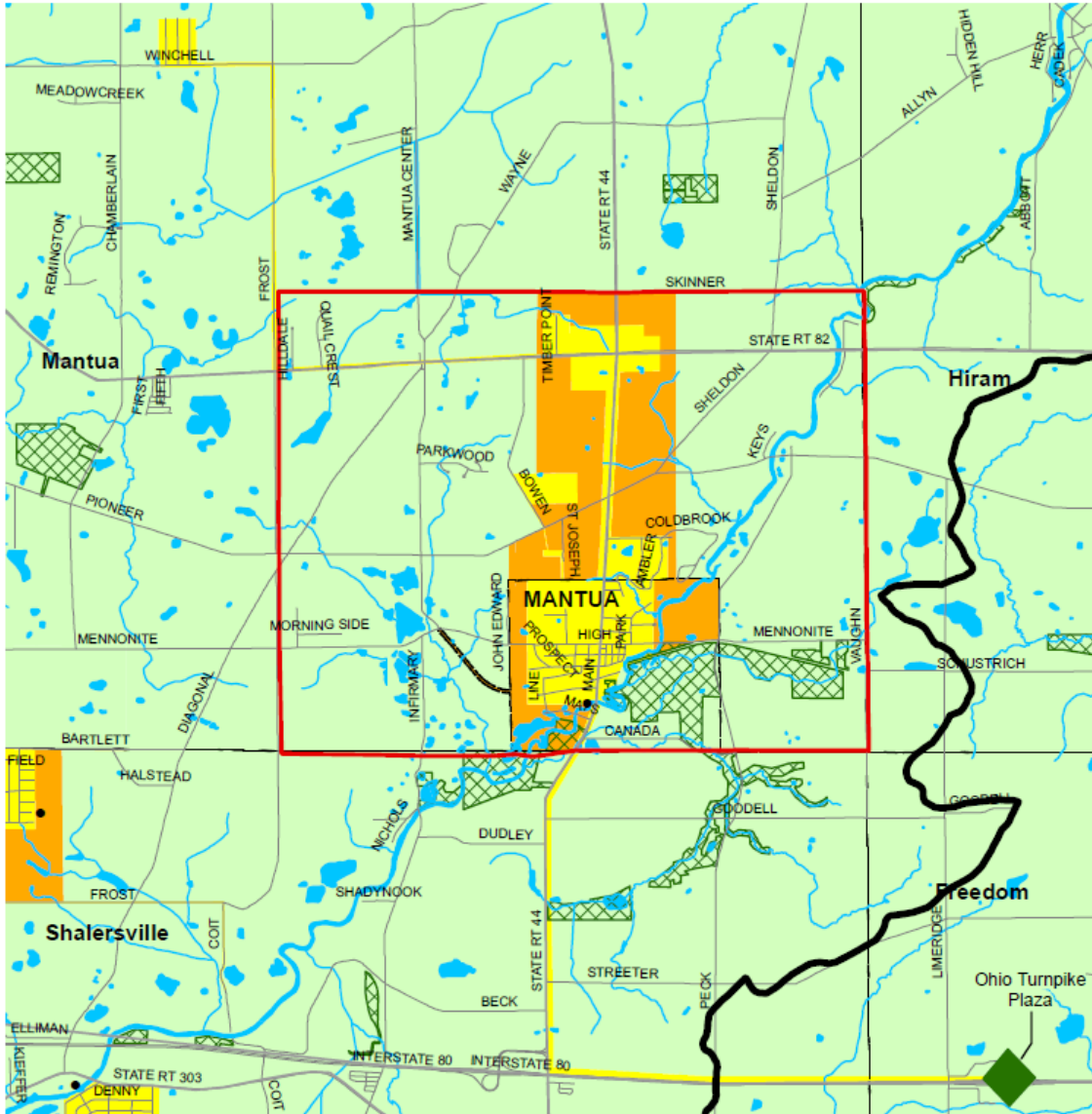
# **Appendix 3-8**

## **Mantua Facilities Planning Area**

**Approved by the NEFCO General Policy Board  
12/21/2011**

# Mantua Facilities Planning Area

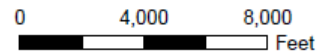
## 208 Clean Water Plan



- Areas Currently Served with Sanitary Sewers
- Areas Expected to be Served with Sanitary Sewers within the Next 20 Years
- Areas that will be Served by a POTW or by Home Sewage and Semi-Public Sewage Disposal Systems
- Parks and Natural Areas
- Lakes and Ponds

- Basin Divide
- FPA Boundary
- Stream
- Community Boundary
- Highway
- Road
- Publicly Owned Wastewater Treatment Works (POTW)

\* Please see Clean Water Plan text for a complete explanation of the mapping categories.  
 \* Please see the FPA Reference Map (figure 3-1a) for names of adjacent FPAs.



Northeast Ohio Four County Regional Planning and Development Organization, December 21, 2011.

Approved by the NEFCO General Policy Board  
 12/21/2011

## **Mantua Facilities Planning Area**

### **I. Existing Situation**

#### **A. County/Basin:**

Portage/Lake Erie

#### **B. Facilities Planning Area:**

Mantua

#### **C. Designated Management Agency:**

##### **I. Primary DMA**

a) Village of Mantua

##### **II. Secondary DMA**

a) Portage County Water Resources Department (Portage County Regional Sewer District)

b) Village of Mantua

#### **D. Publicly-Owned Treatment Works:**

Mantua WWTP, .5000 MGD

#### **E. Facilities Plan:**

Unknown

#### **F. Area Served:**

Village of Mantua, Mantua Township (part)

#### **G. Receiving Stream:**

Cuyahoga River

#### **H. Contact Person/Address/Phone/Fax:**

Village of Mantua  
4736 East High Street  
Mantua, Ohio 44255  
Phone: (330) 274-8188  
Fax: (330) 274-8975

Mr. Jeff Lonzrick,  
Interim Director/Sanitary Engineer  
Portage County Water Resources Department  
(Portage County Regional Sewer District)  
Portage County Administrative Building  
449 South Meridian Street  
P.O. Box 1217  
Ravenna, Ohio 44266-0812  
Phone: (330) 297-3670  
Fax: (330) 297-3680

Approved by the NEFCO General Policy Board  
12/21/2011

**I. Population Served:**

The population projections used in the 201 Plan and those in the NEFCO 208 Clean Water Plan are compared below.

a) Mantua	<u>1990</u>	<u>1995</u>	<u>2000</u>	<u>2005</u>	<u>2010</u>	<u>2015</u>	<u>2020</u>	<u>2025</u>
201	----	----	-----	----	----	----	----	----
Approved 208	2,628	2,734	2,846	2,948	----	----	----	----

The above population projections (Approved 208) were prepared in 1990. Updated projections are scheduled to be prepared after county population projections are produced by the Ohio Department of Development Office of Strategic Research.

**II. Wastewater Treatment Planning Prescriptions and Wastewater Planning Options**

Original source information provided by the Village of Mantua, December 4, 2000 and Portage County Water Resources Department (Portage County Regional Sewer District), June 30, 2000.

Mantua Jurisdiction

**Areas Currently Sewered (yellow)** - These areas are currently served with sanitary sewers that have been constructed and are currently in operation. All new development and construction in this area will be required to connect to and/or provide sanitary sewer service to ensure that wastewater will be treated at the existing Village of Mantua’s Wastewater Treatment Plant. Any existing private treatment systems, which cease to operate properly, shall be abandoned and connection made to the existing sanitary sewer system.

**Areas Programmed for Sewers Within the Next 20 Years (orange)** - All future sanitary sewers constructed in this area will be connected to the Village of Mantua’s Wastewater Treatment Plant. These areas will be served by sanitary sewers upon request and at the applicant’s expense. If applicable, the extension of sanitary sewer service to properties outside the corporation limits of the Village of Mantua shall abide by any intergovernmental agreement in place between the Village of Mantua and the Portage County Board of Commissioners.

Existing household sewage disposal systems must be abandoned when sanitary sewers are available to the property and in accordance with the requirements of the Ohio Administrative Code. New on-site sewage disposal systems must comply with the regulations and guidelines of the Portage County Health Department. Off-lot discharging systems in this area will not be permitted.

Approved by the NEFCO General Policy Board  
12/21/2011

Portage County Water Resources Department (Portage County Regional Sewer District)  
Jurisdiction

**Areas Currently Sewered (yellow):**

*Mantua Township* - These areas are currently served with sanitary sewers that have been constructed and are currently in operation. However, there may be undeveloped tracts of land and vacant lots subject to improvement. All new development and construction in the yellow areas of this facility planning area will be required to connect to and/or provide sanitary service to ensure that wastewater will be treated at an existing publicly-owned treatment works (POTW) with modifications or expansions as required to handle the flow. Existing non-residential private treatment systems (semi-public), which cease to operate properly, shall be abandoned and connection made to the existing sanitary sewer system. Failing HSDSs serving single family homes shall be abandoned in accordance with Ohio Administrative Code 3701-29-02.

The Ohio Turnpike Brady's Leap Rest Stop was previously approved to be pumped to the Village of Mantua in a 201 update and is part of the area currently sewered. By agreement with the Portage County Board of Commissioners, Mantua provides sewage service to the Ohio Turnpike at Brady's Leap Plaza. The turnpike plaza, located near Limeridge Road in Freedom Township, is serviced by a pump station and force main routed west along the turnpike to S.R. 44 and north along S.R. 44 to the Village's sewer system. Further information is available from the Village of Mantua.

**Areas That Will be Served by a POTW or by On-Site Non-discharging Systems**

**(green):** *Mantua Township* - Future development will be served by an existing POTW modified or expanded as required to handle the flow or a non-discharging sewage disposal system. Non-discharging systems including on-site septic systems and systems in which the effluent is applied to the land are locally permitted at this time. New discharging systems are only permitted for repair of existing systems in cases where both central sewer and non-discharging systems are not available.