

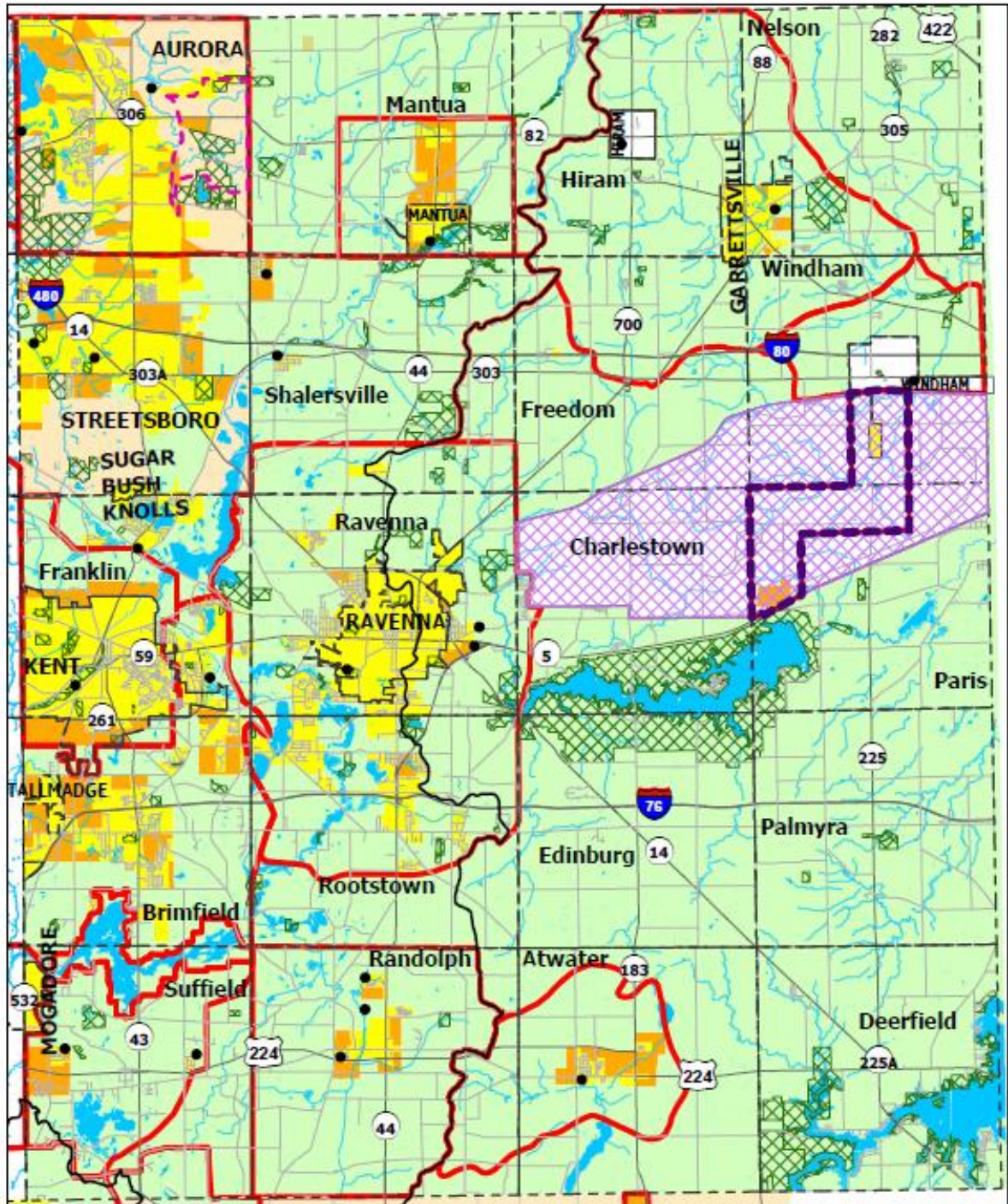
## **Appendix 3-2**

### **Portage County Facilities Planning Areas (FPA)**

**Approved by the NEFCO General Policy Board  
10/17/2018**

# Portage County Facilities Planning Areas

## 208 Clean Water Plan



- Areas Currently Served with Sanitary Sewers
- Areas Expected to be Served with Sanitary Sewers within the Next 20 Years
- Areas that will be Served by Home Sewage and Semi-Public Sewage Disposal Systems
- Areas that will be Served by a POTW or by Home Sewage and Semi-Public Sewage Disposal Systems
- Areas without a Wastewater Treatment Planning Prescription
- Potential Additional Sanitary Sewer System Service Area
- Ohio Army National Guard Facility Extension of Windham FPA
- Parks and Natural Areas
- Ohio Army National Guard (OHANG)
- Lakes and Ponds
- Basin Divide
- FPA Boundary
- Stream
- Community Boundary
- Highway
- Road
- Railroad
- Publicly Owned Wastewater Treatment Works (POTW)

\* Please see Clean Water Plan text for a complete explanation of the mapping categories.

\* Please see the FPA Reference Map (figure 3-1a) for names of adjacent FPAs.

