

M E M O R A N D U M

TO: NEFCO General Policy Board

FROM: Laura Minnig, Environmental Planner

DATE: December 14, 2016

SUBJECT: Consideration of an Amendment to the Clean Water Plan for the Barberton-Wolf Creek Facilities Planning Area to update the wastewater prescription for a selected area in the City of Norton; at the request of Summit Metro Parks

What's being requested: The Barberton-Wolf Creek Facilities Plan does not currently address special situations in which a park service or similar entity wishes to provide a public restroom in an area that is inaccessible to a sanitary collection system. On behalf of Summit MetroParks, the City of Barberton is proposing that a statement be added to the current wastewater prescription to allow for the installation and maintenance of restrooms where wastewater is stored, composted or incinerated in public areas where sanitary sewer is not accessible. "Accessible" could mean the State criteria of 200 feet or could be more if called into question.

Background (adapted from information provided by the City of Barberton):

Summit MetroParks wishes to construct a vault-type restroom at 4325 S. Medina Line Road (see attached map). The distance to the nearest sanitary sewer is approximately 2 miles (Wooster Road/Eastern Road). In applying for an Ohio EPA Permit To Install the issue came to light that there is no provision in the Barberton-Wolf Creek FPA for this type of situation. Metro Parks is well adept at constructing, operating and maintaining this type of facility. On July 21, 2010, the NEFCO General Policy Board approved a similar amendment to allow MetroParks a vault-type restroom in the Akron Facilities Planning Area for a site in Tallmadge. NEFCO staff has learned that Ohio EPA-NEDO has issued a PTI to Metro Parks for this restroom, however a 208 amendment is still required.

Facilities Planning Area (FPA) boundary: There is no change to the boundary.

Current wastewater prescription: Areas that will be served by a POTW or by On-site Non-discharging Systems (green): This area contains large undeveloped tracts of land and vacant lots subject to improvement. In no case shall a system producing an off-lot discharge of effluent be permitted for new construction. All new subdivision development, whether residential or non-residential, will be required to connect and/or provide sanitary service to ensure that wastewater will be treated at an existing POTW. Vacant lots within existing HSTS-served subdivisions and remote metes-and-bounds residentially-zoned parcels may be so improved with new HSTSs provided the local health department finds that soils are suitable to assure there will be no off-lot discharge of effluent. All proposed new commercial, industrial, and institutional development, located where access to sanitary sewer is not currently available, may be considered for

installation of a new semi-public or private sewage treatment system provided the local health department or OEPA and the local Sanitary Engineer concur that a public wastewater collection system will remain unavailable for the foreseeable future. When sanitary sewers become available, all existing systems will be required to connect to sanitary sewers to ensure that wastewater will be treated at an existing POTW. Existing (developed) multi-family, commercial, industrial, and institutional properties, major and minor subdivisions, along with single-family home HSTs within this area, shall be required to connect to the sanitary sewer, as it becomes available, for the removal and treatment of sanitary wastewater. At the cost of the current property owner, all semipublic or private sewage treatment systems including functioning systems shall be connected to sanitary sewer when it becomes available or when the property owner is so directed by the Ohio EPA or local health department. All failing HSTs must be repaired or replaced to meet the standards found within OAC 3701-29, providing that the local health department finds a suitable treatment system design and installation that meets state and local requirements. All failing semipublic/private treatment systems must be repaired or replaced as required by the OEPA. The local planning agency, health department, OEPA and the local Sanitary Engineer must also concur that a public wastewater collection system will remain unavailable for the foreseeable future.

Proposed Addition to Prescription: In areas where restrooms were installed or needed on public park properties where sanitary sewers are not available, park districts may install restroom facilities which store or compost generated wastewater. These restroom facilities shall not be connected to a potable water source (for use with sinks, flush toilets, kitchens) nor receive discharges from potable water facilities (including drainage from outside water fountains, kitchens etc.). These facilities must obtain an Ohio EPA Permit to Install and supply an operation and maintenance plan to the property owner for their acceptance.

Local governments/agencies affected: City of Norton, City of Barberton, Summit County Public Health, Summit MetroParks. Comment letters received to date are attached.

Public notification efforts: A Public Notice and Request for Comments was published in the October 29, 2016, Akron Beacon Journal. (See attached.)

Staff recommendation: Staff recommends approval of this amendment.

Environmental Resources Technical Advisory Committee (ERTAC) Action: The ERTAC performed a technical review of the proposed amendment at its December 7, 2016 meeting and recommended approval by the NEFCO Board.

NEFCO General Policy Board Action: Consideration of approval of Resolution No. FY2017-007.

RESOLUTION OF THE GENERAL POLICY BOARD OF THE NORTHEAST OHIO FOUR COUNTY REGIONAL PLANNING AND DEVELOPMENT ORGANIZATION (NEFCO) APPROVING AN AMENDMENT TO THE CLEAN WATER PLAN FOR THE BARBERTON-WOLF CREEK FACILITIES PLANNING AREA TO UPDATE THE WASTEWATER PRESCRIPTION FOR A SELECTED AREA IN THE CITY OF NORTON; AT THE REQUEST OF SUMMIT METRO PARKS

WHEREAS, NEFCO is the designated water quality management planning agency for Portage, Stark, Summit and Wayne Counties; and

WHEREAS, as part of that designation it is NEFCO's responsibility to coordinate the use and update of its Clean Water Plan, also known as the 208 Plan; and

WHEREAS, NEFCO has been requested by the City of Barberton on behalf of Summit Metro Parks to consider an amendment to the Clean Water Plan for the Barberton-Wolf Creek Facilities Planning Area to update the wastewater prescription; and

WHEREAS, this amendment will result in no change to the boundary of the Barberton-Wolf Creek Facilities Planning Area; and

WHEREAS, this amendment would make the following additions to the current wastewater prescriptions for the FPA, for areas that will be served by a publicly-owned treatment works POTW or by On-site Non-discharging Systems (green), as summarized below:

In areas where restrooms were installed or are needed on public park properties where sanitary sewers are not available, park districts may install restroom facilities which store or compost generated wastewater. These restroom facilities shall not be connected to a potable water source (for use with sinks, flush toilets, kitchens) nor receive discharges from potable water facilities (including drainage from outside water fountains, kitchens etc.). These facilities must obtain an Ohio EPA Permit to Install and supply an operation and maintenance plan to the property owner for their acceptance; and

WHEREAS, the Ohio Environmental Protection Agency (Ohio EPA) has requested NEFCO's approval of this amendment as a step in Ohio EPA's permitting process; and

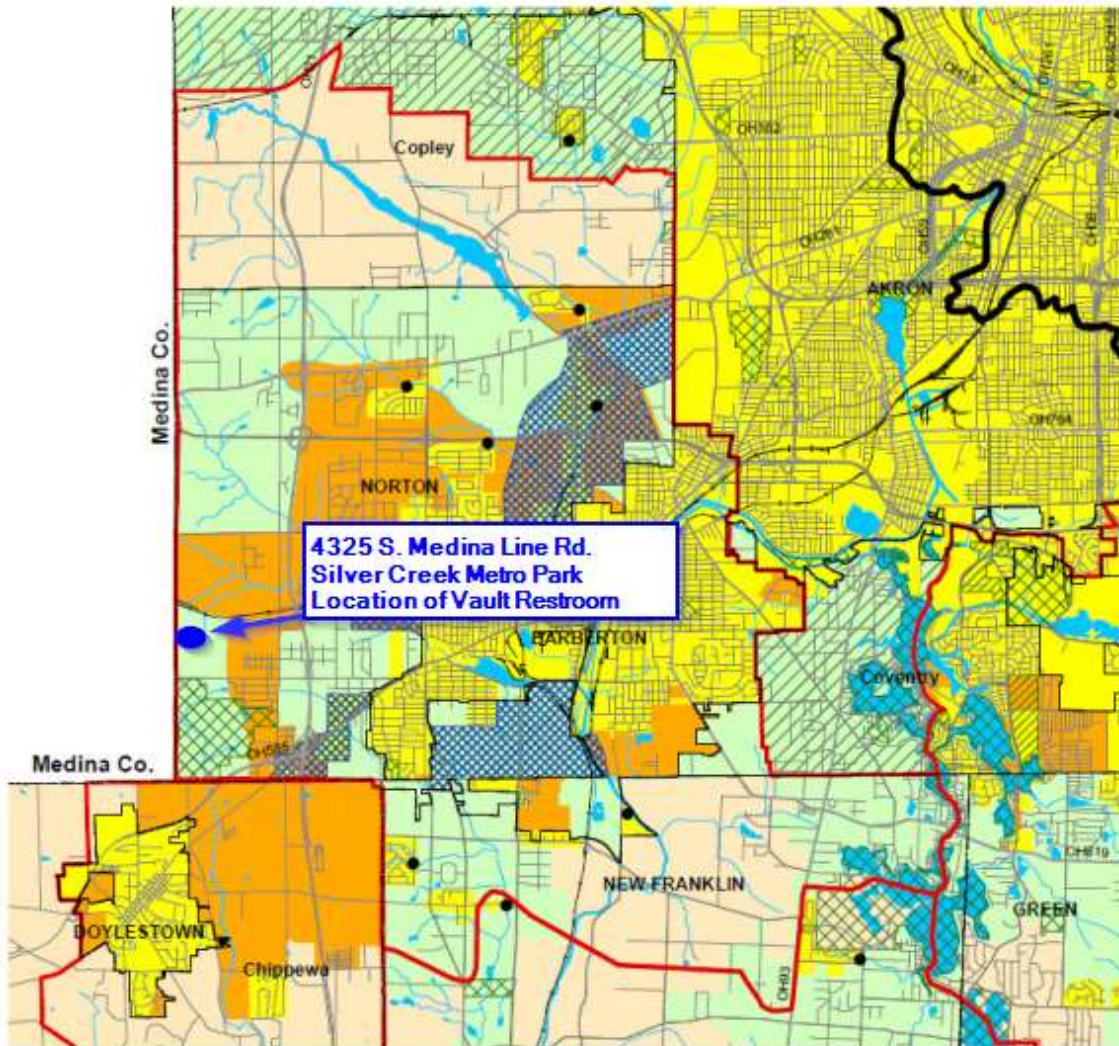
WHEREAS, the NEFCO Environmental Resources Technical Advisory Committee (ERTAC) performed a technical review of this requested amendment and recommended approval;

NOW, THEREFORE, BE IT RESOLVED that the NEFCO General Policy Board approves this amendment to update the wastewater prescriptions for the Barberton-Wolf Creek Facilities Planning Area. Furthermore, the Board directs staff to incorporate this amendment into NEFCO's Clean Water Plan and to transmit pertinent amendment materials to the City of Barberton, Summit Metro Parks, City of Norton, and Summit County Public Health, Summit County Department of Sanitary Sewer Services, and the Ohio EPA.

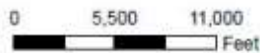
Certified as action taken by the NEFCO General Policy Board at its regular meeting held on December 21, 2016.


Bob Breneman, Secretary
NEFCO General Policy Board

Barberton-Wolf Creek Facilities Planning Area 208 Clean Water Plan Proposed Prescription Change Silver Creek Metro Park Vault Type Restroom



- | | |
|--|---|
| <ul style="list-style-type: none"> Areas Currently Served with Sanitary Sewers Areas Expected to be Served with Sanitary Sewers within the Next 20 years Areas that will be served by On-site Non-Discharging Systems Areas that will be served by POTW or by On-site Nondischarging Systems Akron Joint Economic Development District Contract Areas Barberton-Norton Joint Economic Development District Parks and Natural Areas Lakes and Ponds | <ul style="list-style-type: none"> FPA Boundary Basin Divide Stream Community Boundary Highway Road Publicly Owned Wastewater Treatment Works (POTW) |
|--|---|



* Please see Clean Water Plan text for a complete explanation of the mapping categories.
* Please see the FPA Reference Map (figure 3-1a) for names of adjacent FPAs.